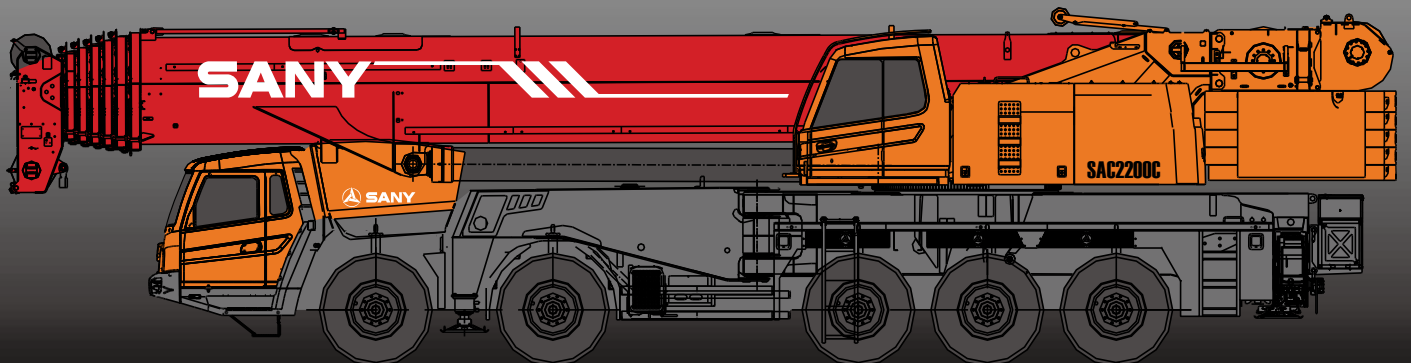


SAC2200C

SAC2200C ALL-TERRAIN CRANE
220 TONS LIFTING CAPACITY

Quality Changes the World



SANY

SANY Automobile Hoisting Machinery is one of the core business unit of Sany Heavy Industry, mainly engaged in the research and development of high end, mid to large tonnage crane series, including mobile crane, crawler crane, tower crane and loader crane. It has two industrial parks in Ningxiang and Huzhou, since entering the market, the products of Sany Automobile Hoisting Machinery have received worldwide recognition with advanced technology, lean manufacturing, high reliability and excellent service.





SANY ALL-TERRAIN CRANE

CONTENT

04	Icon
05	Selling points
06	Introduction
09	Dimension
10	Technical Parameter
11	Operation Condition
12	Load Chart
45	Wheel Crane Family Map



Cab



Carrier frame



Suspension system



Hydraulic system



Outriggers



Telescopic boom



Control system



Engine



Lattice jibs



Telescopic system



Transmission system



Superlift devices



Luffing system



Drive/Steer



Luffing lattice jib



Slewing



Axles



winch mechanism:



Counterweight



Tyres



Safety system



Brakes system



Hoist system

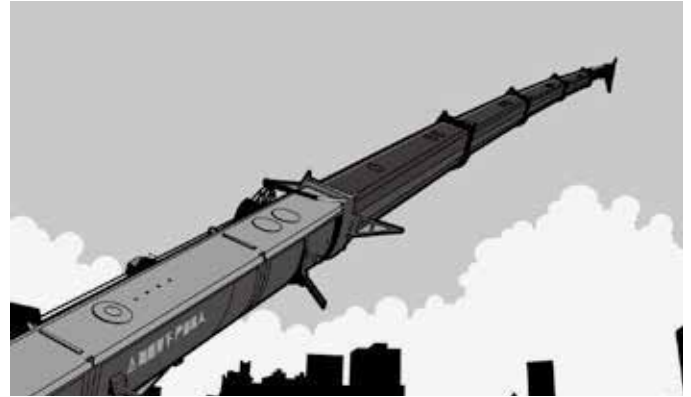


Electrical system



Excellent and Stable Chassis Performance

The use of innovative 5-axle chassis design and multi braking modes provide more reliable traveling performance for chassis. With tipping early-warning technology, high stable overall operation and high safety can be achieved.



Ultra strong, super long and sensitive lifting performance

It leads the industry with longest boom length of 103m and lifting height of 103.5m. Max. lifting capacity of 220t ensures the super-strong lifting capacity. 0°~ 40° automatical infinite variable luffing jib is applied to ensure conveniently switching over between all operating conditions with high operation efficiency.



Highly efficient, energy-saving and original hydraulic control technology

Self-developed dual-pump converging / diversion main valve is used. Converging flow of the single-action dual-pump can be up to 520L/min to ensure fast operation and high work efficiency. Combined-action dual-pump diversion system is applied to ensure stable controllability, with independent oil supply achieved for reliable operation. Electric proportional variable piston pump is used to ensure accurate flow control which is efficient and energy saving.

Optimized Structure Design with light machine. The weight of traveling condition is not over 55t . the weight of crane is reduced, the rigidity is improved and the fuel consumption is reduced.

The boom-tip pulley is able to be assembly/disassembly itself.



Safe, stable, advanced and intelligent electronic control technology

The adoption of internationally advanced distributed integration bus data communication network and sensing elements of complete set of configuration can achieve timely feedback of data information, and monitor the overall working status in real-time. The human-computer interaction interface is used to fully meet customer's individual requirements.

More safe Devices

The voice alarm, anti-rollover function and ABS are applied based on other common safety devices.


Lifting Expert System

The system could guide and provide lifting plan or select the best lifting plan which could ensure the stability and safety of the construction.

Superstructure

 Cab

- It is made of safety glass and anti-corrosion steel plate with ergonomic design such as full-coverage soften interior, panoramic sunroof and adjustable seats etc., and humanized design providing more comfortable and relaxing operation experience. The display of load moment limiter integrates main console and operation display system, which clearly show the data of all operating superstructure conditions for lifting operation.

 Engine

- Type: Inline six-cylinder, water cooled, supercharged and inter-cooling diesel engine
- Rated power: 178kw/2200r/min
- Environment-protection: Emission complies with Euro III standard
- Capacity of fuel tank: 260L

 Hydraulic system

- The adoption of high-quality main oil pump, slewing pump, main valve, winch motor, and balance valve etc. key hydraulic parts ensure the high stability and reliability of the system. Accurate parameter matching provides more excellent operation performance. The electric proportional variable piston pump is used to adjust the pump displacement in real-time through the change of the opening of the electrical control handle, thus achieving high-precision flow control with no-loss of energy during operation. Self-developed dual-pump converging / diversion main valve is used with single-action dual-pump applied to ensure high converging efficiency and with combined-action dual-pump diversion applied to ensure good controllability.
- The use of self-weight lowering compensation hydraulic system ensures excellent lowering micro-mobility and stability.
- Single-cylinder pin telescopic system is used for boom.
- Jib is equipped with luffing cylinder to achieve 0°~40°infinitely luffing the mechanical luffing is available and hydraulic automatic luffing is optional.
- Closed slewing system is used with flow and direction changed through adjusting the angle of the swash plate of the variable pump, thus ensuring the excellent micro-mobility and stable rotation.
- Capacity of hydraulic oil tank: 1025L.

 Control system

- SYMC load moment limiter system developed by SANY can electrically control (PLC control) the crane. Two multi-directional handles can reset automatically. The crane movement can be adjusted through hydraulic pump and its speed can be controlled through regulating the engine speed.

 Luffing system

- Self-weight lowering features higher energy-saving capacity is applied. The use of single cylinder and arrangement of front hinge ensure easy luffing operation and reduce stress on the lifting boom. The electric proportional control balance valve is used. Luffing angle: -0.2°~82°.

 Telescopic system

- Seven-section boom is applied with basic boom length of 13.8m and lifting height of fully extended boom length of 73.5m respectively. Max. lifting height is 103.5m including jib. It is made of fine grain high-strength steel, designed with U-shaped section and with telescopic operation driven by independent hydraulic system.

 Slewing system

- 360° rotation is applied with Max. slewing speed up to 1.5r/min. One closed proportional variable pump and two axial constant-displacement plunger hydraulic motor are used. The use of electric proportional closed hydraulic circuit and electric proportional pedal can achieve emergency brake.

 Hoisting system

- Main winch adopts the electric proportional variable motor to provide good micro-mobility and stability of the winch and to achieve infinitely variable speed. The use of self-developed closed slewing buffer system can ensure more stable rotation starting and braking process and with excellent micro-mobility Diameter of wire ropes of main and auxiliary winches is 22mm and length of the wire ropes is 440m and 280m respectively.

Superstructure



Safety system

- Load moment limiter: With analytical mechanics method, the load moment limiter calculation system is established based on the load mechanical model. Therefore, the rated hoisting accurate can be up to $\pm 3\%$ through on-line non-load calibration, thus protecting the hoisting operation in all aspects. In case of overload operation, system will issue an alarm automatically to provide safety guarantee for operation.
- Hydraulic system is configured with the balance valve, overflow valve, and two-way hydraulic lock etc. components, thus achieving the stable and reliable operation of the hydraulic system.
- Main and auxiliary winches are configured with 3-wraps protectors to prevent over roll-out of wire rope.
- Boom and jib are configured with height limiters at ends to prevent over-hoist of the wire rope.
- Boom head is equipped with anemometer to detect whether the high-altitude wind speed is out of the allowable range.



Counterweight

- Combined variable counterweights are used with 0t, 8.6t, 20.6t, 31.6t, 42.6t, 53.6t, 76.6t seven combinations with good micro-mobility

Chassis



Driver's Cab

- Cab is made of new steel structure self-developed by SANY, featuring excellent shock absorption and tightness, which is configured with swing-out doors at both sides, pneumatically suspended driver's seat and passenger seat, adjustable steering wheel, large rearview mirror, comfort driver chair having a headrest, anti-fog fan, air conditioner, stereo radio, and complete control instruments and meters, providing more comfortable, safe, and humanized operation experience. Sleeper is optional.



Carrier frame

- Designed and manufactured by SANY, anti-torsion box structure is welded by fine-grain high-strength steel plate to provide strong load bearing capacity.



Axles

- Full-axle steering is applied with axles 1, 3, 4 and 5 used for drive operation, and hydraulic auxiliary driving is optional for axle 1 and with axles 1, 3, 4 and 5 equipped with differential locks between wheels for planetary transmission. Axles 1 and 2 adopt the bar-feedback hydraulic power steering systems and axles 3, 4 and 5 adopt the electrohydraulic control steering system, with assist in speed control and special steering mode optional applied, ensuring easy steering and flexible operation.



Engine

- Type: Inline eight-cylinder, water cooled, supercharged and inter-cooling diesel engine
- Rated power: 392kw/2100r/min
- Environment-protection: Emission complies with EuroIII standard
- Capacity of fuel tank: 500L



Transmission system

- Gearbox: Manual / Automatic gearbox is adopted with 12-gear and large speed ratio range, which meets the requirements of low gradeability speed and high speed traveling.
- Transmission shaft: With optimized arrangement of the transmission shaft, the transmission is more stable and reliable. For most optimized transmission, face-tooth coupling transmission shaft is used with large transmission torque.

Chassis

**Brakes system**

- Brakes system includes traveling brake, parking brake,
- Parking brake: Force driven by accumulator is applied on the second to fifth axle.
- Traveling brake: All wheels use the air servo brakes and dual-circuit brake system, and are equipped with drum brakes.
- Auxiliary brake: Engine is equipped with engine brake and exhaust brake to reduce crane speed in advance, thus reducing wear on the braking parts and saving cost significantly.

**Suspension system**

- Axle suspension devices adopt the height-adjustable oil-gas suspension devices equipped with the hydraulic lock, with suspension height changed within $\pm 150\text{mm}$ to achieve suspension, rigid locking, automatic leveling, overall lifting and lowering, single-point lifting and lowering modes. With good trafficability and adaptability of a variety of severe operating conditions and road, traveling smoothness, comfort ability and good side stability can be achieved.
- The increasing of the crane drive force can be achieved through lifting the third axle to adapt to the snowfield and other complex road conditions etc.

**Steering system**

- Servo power steering gear and dual-circuit system hydraulic steering device are used with emergency steering pump equipped. Axles 3, 4 and 5 adopt the electro-hydraulic steering control with steering adjusted through regulating the speed. Axle 3 steering will stop from 30km/h and from 60km/h for axles 4 and 5.
- Six types steering modes: 1) Road running mode (default mode). 2) Full-wheel steering mode. 3) Crab-type mode. 4) Steering mode without deflection. 5) Independent rear-axle steering mode. 6) Steering mode with rear axle locked.

**Outriggers**

- Four-point supporting with Max. K-shaped outrigger's span is up to 8.2m \times 8.35m , and full-hydraulic horizontal and vertical outrigger cylinder telescopic movement are applied with the automatic level adjustment function.

**Tyres**

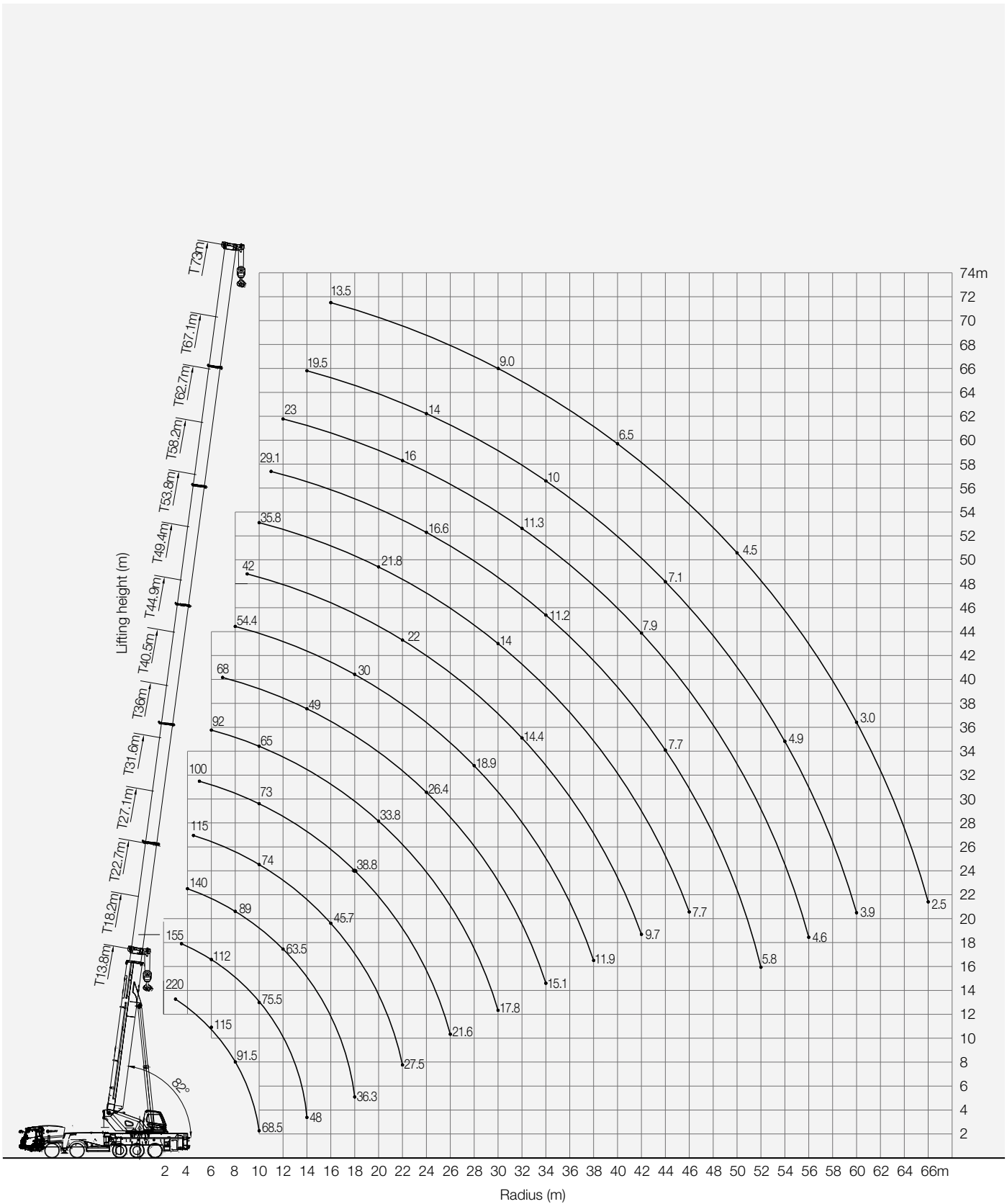
- 10*14R25

**Electrical system**

- Modern data bus system equipped with 24V DC power supply and two sets of batteries with 180AH for each set is used to cut off the power supply of undercarriage Chassis adopts CAN-bus system.
- Chassis adopts CAN-bus system. Multifunctional centralized display system is used. Power consumption is small, with maximum value of only 5w. Four functional keys are provided on the user interface. LCD display is used with contrast adjustable.

SAC2200C ALL-TERRAIN CRANE
TECHNICAL PARAMETER

Type	Item	Parameter	
Capacity	Max. lifting capacity	220 t	
Dimensions	Overall length	15816 mm	
	Overall width	3000 mm	
	Overall height	4000 mm	
	Axle distance	Axle-1,2	2130 mm
		Axle-2,3	3675 mm
Axle-3,4		1550 mm	
Axle-4,5		1550 mm	
Weight	Overall weight	54980 kg	
	Axle load	Axle load-1,2	11900, 11990 kg
		Axle load-3,4,5	10500, 10250, 10250 kg
Engine	Rated power	392 kW / 2100 rpm	
	Rated torque	2508 N.m / 1200 rpm	
Traveling	Max.traveling speed	80 km/h	
	Turning radius	Min.turning radius	10 m
		Min.turning radius of boom head	12 m
	Wheel formula	10 × 8 (6)	
	Min.ground clearance	325 mm	
	Approach angle	18 °	
	Departure angle	15 °	
	Max.gradeability	40%	
Fuel consumption per 100km	≤ 70 L		
Main Performance Data	Temperature range	-20 ° ~ +40 °	
	Min.rated range	3 m	
	Tail slewing radius of swingtable	5.16 m	
	Boom section	7	
	Boom shape	U-shaped	
	Max.lifting moment	Base boom	7271 kN·m
		Full-extend boom	2665 kN·m
		Full-extend boom+jib	941 kN·m
	Boom length	Base boom	13.8 m
		Full-extend boom	73 m
Full-extend boom+jib		103. m	
Outrigger span (Longitudinal×Transversal)	8.2 × 8.35 m		
Jib offset	0° ~ 40°		
Working speed	Max.single rope lifting speed of main winch (no load)	130 m/min	
	Max.single rope lifting speed of auxiliary winch (no load)	130 m/min	
	Full extension/retraction time of boom	660 / 660 s	
	Full lifting/descending time of boom	60 / 90 s	
	Slewing speed	1.5 r/min	
Air condition	Superstructure	Cooling / Heating	
	Chassis	Cooling / Heating	



Prerequisites:

- ① Boom operating conditions (fully extended boom length), min length is 13.8m and max. length is 73m
- ② The span of outriggers is 8.2m×8.35m
- ③ 360° rotation is applied
- ④ Counterweight is 0T

Working range (m)	Main boom										Working range (m)	
	13.8	18.2	18.2	18.2	22.7	22.7	22.7	22.7	27.1	27.1		
3	150.0											3
3.5	140.0	135.0	135.0	79.5								3.5
4	130.0	130.0	130.0	70.6	125.0	125.0	73.5	51.7				4
4.5	120.0	120.0	120.0	65.2	115.0	115.0	68.3	48.9	110.0	105.0		4.5
5	110.0	110.0	110.0	61.9	100.0	100.0	63.7	45.6	100.0	98.4		5
6	89.6	87.0	91.2	57.3	87.6	90.9	57.0	41.1	88.9	87.0		6
7	59.5	57.5	60.9	52.6	58.0	60.7	51.9	37.5	59.1	57.5		7
8	42.1	40.3	43.5	46.4	40.8	43.3	47.7	34.1	41.8	40.3		8
9	31.5	30.0	31.0	30.0	30.4	32.7	37.0	31.6	31.4	30.0		9
10	24.5	23.1	25.7	28.1	23.6	25.6	29.6	29.1	24.4	23.2		10
11		17.9	20.6	22.9	18.4	20.6	24.3	24.8	19.3	18.1		11
12		14.0	16.6	18.8	14.5	16.5	20.3	20.8	15.4	14.2		12
14		8.7	11.0	13.0	9.2	11.0	14.5	15.0	10.0	8.9		14
16					5.7	7.5	10.7	11.2	6.5	5.5		16
18					3.3	4.9	8.0	8.5	4.1	3.1		18
20									2.3	1.3		20
22												22
24												24
26												26
28												28
30												30
32												32
34												34
36												36
38												38
40												40
42												42
44												44
46												46
48												48
50												50
52												52
54												54
56												56
58												58
60												60
62												62
64												64
66												66
Number of line	15	14	14	8	13	13	8	8	12	11	Number of line	
2	0	45	0	0	45	0	0	0	45	90	2	
3	0	0	0	0	45	45	0	0	45	45	3	
4	0	0	45	0	0	45	0	0	45	0	4	
5	0	0	0	0	0	0	0	0	0	0	5	
6	0	0	0	0	0	0	45	0	0	0	6	
7	0	0	0	45	0	0	45	90	0	0	7	

Prerequisites:

- ① Boom operating conditions (fully extended boom length), min length is 13.8m and max.length is 73m
- ② The span of outriggers is 8.2m×8.35m
- ③ 360° rotation is applied
- ④ Counterweight is OT

Working range (m)	Main boom										Working range (m)	
	27.1	27.1	31.6	31.6	31.6	31.6	36.0	36.0	36.0	36.0		
3												3
3.5												3.5
4												4
4.5	45.0	44.8										4.5
5	42.2	42.3	90.0	87.8	53.8	35.9						5
6	37.8	38.0	80.0	79.4	48.3	32.3	92.0	72.4	66.4	72.3		6
7	34.1	34.5	60.6	58.6	44.2	29.3	62.1	58.4	60.4	60.1		7
8	31.1	31.4	43.3	41.3	40.8	27.1	44.7	41.2	47.7	42.8		8
9	28.3	28.7	32.6	30.9	37.3	25.2	33.9	30.8	36.6	32.2		9
10	26.1	26.4	25.6	24.0	30.4	23.1	26.8	23.9	29.2	25.2		10
11	24.6	24.9	20.5	18.9	25.1	21.2	21.7	18.8	24.0	20.1		11
12	21.2	21.7	16.5	15.0	21.1	20.1	17.6	14.9	20.0	16.1		12
14	15.3	15.7	11.0	9.7	15.2	16.3	12.1	9.6	14.2	10.7		14
16	11.5	11.9	7.5	6.2	11.4	12.4	8.5	6.2	10.5	7.2		16
18	8.9	9.2	5.0	3.8	8.8	9.7	6.0	3.7	7.9	4.8		18
20	6.9	7.2	3.2	2.0	6.8	7.7	4.1	2.0	5.9	2.9		20
22	5.3	5.7	1.8		5.3	6.2	2.7		4.5	1.5		22
24					4.1	5.0	1.5		3.3			24
26					3.1	4.0			2.3			26
28									1.5			28
30												30
32												32
34												34
36												36
38												38
40												40
42												42
44												44
46												46
48												48
50												50
52												52
54												54
56												56
58												58
60												60
62												62
64												64
66												66
Number of line	5	5	9	9	6	4	9	8	7	7	Number of line	
2	0	0	45	90	0	0	45	90	0	45	2	
3	0	0	45	45	0	0	45	90	45	90	3	
4	0	0	45	45	0	0	45	45	45	90	4	
5	0	0	45	0	90	0	45	0	45	0	5	
6	90	45	0	0	45	90	45	0	45	0	6	
7	45	90	0	0	45	90	0	0	45	0	7	

**SAC2200C ALL-TERRAIN CRANE
LOAD CHART**
Prerequisites:

- ① Boom operating conditions (fully extended boom length), min length is 13.8m and max.length is 73m
- ② The span of outriggers is 8.2m×8.35m
- ③ 360° rotation is applied
- ④ Counterweight is OT

Working range (m)	Main boom										Working range (m)
	40.5	40.5	40.5	40.5	44.9	44.9	44.9	44.9	49.4	49.4	
3											3
3.5											3.5
4											4
4.5											4.5
5											5
6											6
7	63.8	61.0	59.4	35.5							7
8	46.3	43.6	42.2	32.2	45.1	42.6	38.7	35.5			8
9	35.3	32.9	31.7	30.2	34.2	32.1	36.4	33.0	34.0	33.3	9
10	28.1	25.9	24.7	28.7	27.1	25.1	29.0	30.6	26.9	26.2	10
11	22.9	20.8	19.6	26.0	22.0	20.0	23.8	25.3	21.8	21.1	11
12	18.9	16.8	15.6	22.0	17.9	16.0	19.8	21.2	17.7	17.1	12
14	13.2	11.3	10.3	16.1	12.3	10.6	14.0	15.4	12.2	11.6	14
16	9.5	7.8	6.8	12.3	8.7	7.1	10.3	11.6	8.6	8.0	16
18	7.0	5.3	4.4	9.6	6.2	4.7	7.7	8.9	6.1	5.5	18
20	5.1	3.4	2.6	7.6	4.3	2.9	5.8	7.0	4.2	3.7	20
22	3.6	2.0	1.2	6.0	2.9	1.5	4.3	5.4	2.8	2.3	22
24	2.5			4.8	1.8		3.2	4.2	1.6	1.1	24
26	1.5			3.8			2.2	3.3			26
28				3.0			1.4	2.5			28
30				2.3				1.8			30
32				1.7				1.2			32
34				1.2							34
36											36
38											38
40											40
42											42
44											44
46											46
48											48
50											50
52											52
54											54
56											56
58											58
60											60
62											62
64											64
66											66
Number of line	7	6	6	4	5	5	4	4	4	4	Number of line
2	45	90	90	0	90	90	45	0	90	90	2
3	45	45	90	0	45	90	45	0	90	90	3
4	45	45	45	45	45	90	45	90	45	90	4
5	45	45	45	45	45	45	45	90	45	45	5
6	45	45	0	90	45	0	45	90	45	45	6
7	45	0	0	90	45	0	90	45	45	0	7

Prerequisites:

- ① Boom operating conditions (fully extended boom length), min length is 13.8m and max. length is 73m
- ② The span of outriggers is 8.2m×8.35m
- ③ 360° rotation is applied
- ④ Counterweight is 0T

Working range (m)	Main boom											Working range (m)
	49.4	49.4	53.8	53.8	53.8	58.2	58.2	62.7	62.7	67.1	73.0	
3												3
3.5												3.5
4												4
4.5												4.5
5												5
6												6
7												7
8												8
9	33.2	37.0										9
10	28.3	29.6	27.0	26.7	28.0							10
11	23.1	24.4	21.9	21.6	22.8	22.3	23.8					11
12	19.1	20.4	17.9	17.5	18.8	18.2	20.5	18.8	20.1			12
14	13.4	14.6	12.3	12.0	13.1	12.6	14.7	13.1	14.4	13.7		14
16	9.7	10.8	8.7	8.4	9.5	9.0	10.9	9.5	10.6	10.0	10.1	16
18	7.1	8.2	6.2	5.9	6.9	6.5	8.3	6.9	8.0	7.4	7.5	18
20	5.2	6.3	4.3	4.1	5.0	4.6	6.3	5.0	6.1	5.5	5.6	20
22	3.8	4.8	2.9	2.6	3.6	3.2	4.9	3.6	4.6	4.1	4.1	22
24	2.6	3.6	1.8	1.5	2.4	2.0	3.7	2.4	3.4	2.9	3.0	24
26	1.7	2.6			1.5	1.1	2.7	1.5	2.5	2.0	2.0	26
28		1.8					1.9		1.7	1.2	1.2	28
30		1.2					1.2		1.0			30
32												32
34												34
36												36
38												38
40												40
42												42
44												44
46												46
48												48
50												50
52												52
54												54
56												56
58												58
60												60
62												62
64												64
66												66
Number of line	4	4	3	3	3	3	3	2	2	2	1	Number of line
2	45	45	90	90	45	90	45	90	45	90	100	2
3	45	45	90	90	90	90	45	90	90	90	100	3
4	90	45	90	90	90	90	90	90	90	90	100	4
5	90	45	45	90	90	90	90	90	90	90	100	5
6	90	90	45	45	90	45	90	90	90	90	100	6
7	0	90	45	0	0	45	90	45	90	90	100	7

**SAC2200C ALL-TERRAIN CRANE
LOAD CHART**
Prerequisites:

- ① Boom operating conditions (fully extended boom length), min length is 13.8m and max.length is 73m
- ② The span of outriggers is 8.2m×8.35m
- ③ 360° rotation is applied
- ④ Counterweight is 8.6T

Working range (m)	Main boom										Working range (m)	
	13.8	18.2	18.2	18.2	22.7	22.7	22.7	22.7	27.1	27.1		
3	160.0											3
3.5	160.0	155.0	155.0	79.5								3.5
4	150.0	145.0	145.0	70.6	140.0	140.0	73.5	51.7				4
4.5	137.0	135.0	135.0	65.2	132.0	132.0	68.3	48.9	115.0	105.0		4.5
5	125.0	126.0	126.0	61.9	123.0	123.0	63.7	45.6	110.0	98.4		5
6	102.0	109.5	112.0	57.3	109.5	110.0	57.0	41.1	107.5	88.3		6
7	75.2	73.2	76.6	52.6	73.7	76.4	51.9	37.5	74.8	73.2		7
8	55.5	53.8	56.7	48.7	54.3	56.6	47.7	34.1	55.2	53.8		8
9	42.7	41.1	41.0	41.0	41.5	43.8	43.4	31.6	42.5	41.1		9
10	33.7	32.4	35.0	37.3	32.8	34.9	38.8	29.1	33.7	32.4		10
11		26.1	28.6	30.8	26.6	28.5	32.2	27.2	27.4	26.3		11
12		21.5	23.8	25.9	21.9	23.8	27.3	25.6	22.7	21.6		12
14		14.9	17.1	19.1	15.4	17.2	20.4	20.9	16.2	15.2		14
16					10.9	12.6	15.8	16.3	11.7	10.7		16
18					7.7	9.3	12.4	12.9	8.5	7.5		18
20									6.1	5.2		20
22									4.2	3.3		22
24												24
26												26
28												28
30												30
32												32
34												34
36												36
38												38
40												40
42												42
44												44
46												46
48												48
50												50
52												52
54												54
56												56
58												58
60												60
62												62
64												64
66												66
Number of line	16	15	15	8	14	14	8	8	12	11	Number of line	
2	0	45	0	0	45	0	0	0	45	90	2	
3	0	0	0	0	45	45	0	0	45	45	3	
4	0	0	45	0	0	45	0	0	45	0	4	
5	0	0	0	0	0	0	0	0	0	0	5	
6	0	0	0	0	0	0	45	0	0	0	6	
7	0	0	0	45	0	0	45	90	0	0	7	

Prerequisites:

- ① Boom operating conditions (fully extended boom length), min length is 13.8m and max.length is 73m
- ② The span of outriggers is 8.2m×8.35m
- ③ 360° rotation is applied
- ④ Counterweight is 8.6T

Working range (m)	Main boom										Working range (m)	
	27.1	27.1	31.6	31.6	31.6	31.6	36.0	36.0	36.0	36.0		
3												3
3.5												3.5
4												4
4.5	45.0	44.8										4.5
5	42.2	42.3	100.0	87.8	53.8	35.9						5
6	37.8	38.0	90.0	79.4	48.3	32.3	92.0	72.4	66.4	72.3		6
7	34.1	34.5	76.3	73.4	44.2	29.3	77.8	63.6	60.4	63.4		7
8	31.1	31.4	56.5	54.8	40.8	27.1	57.8	54.6	54.6	56.1		8
9	28.3	28.7	43.7	42.1	37.3	25.2	45.1	41.9	47.7	43.3		9
10	26.1	26.4	34.8	33.3	34.3	23.1	36.0	33.2	38.5	34.5		10
11	24.6	24.9	28.5	27.0	31.5	21.2	29.6	26.9	31.9	28.2		11
12	22.5	22.8	23.8	22.4	28.0	20.1	24.8	22.3	27.0	23.4		12
14	19.8	20.0	17.2	15.9	21.1	17.6	18.2	15.8	20.2	16.9		14
16	16.6	17.0	12.7	11.4	16.5	15.5	13.7	11.3	15.6	12.4		16
18	13.3	13.6	9.4	8.2	13.2	13.3	10.4	8.1	12.3	9.2		18
20	10.7	11.0	7.0	5.8	10.6	11.6	7.9	5.8	9.8	6.8		20
22	8.7	9.1	5.2	4.0	8.7	9.6	6.1	4.0	7.8	4.9		22
24			3.7	2.6	7.1	8.0	4.6	2.5	6.3	3.5		24
26			2.5	1.4	5.8	6.7	3.4	1.4	5.1	2.3		26
28							2.3		4.0	1.3		28
30							1.5		3.1			30
32												32
34												34
36												36
38												38
40												40
42												42
44												44
46												46
48												48
50												50
52												52
54												54
56												56
58												58
60												60
62												62
64												64
66												66
Number of line	5	5	10	9	6	4	9	8	7	8	Number of line	
2	0	0	45	90	0	0	45	90	0	45	2	
3	0	0	45	45	0	0	45	90	45	90	3	
4	0	0	45	45	0	0	45	45	45	90	4	
5	0	0	45	0	90	0	45	0	45	0	5	
6	90	45	0	0	45	90	45	0	45	0	6	
7	45	90	0	0	45	90	0	0	45	0	7	

**SAC2200C ALL-TERRAIN CRANE
LOAD CHART**
Prerequisites:

- ① Boom operating conditions (fully extended boom length), min length is 13.8m and max.length is 73m
- ② The span of outriggers is 8.2m×8.35m
- ③ 360° rotation is applied
- ④ Counterweight is 8.6T

Working range (m)	Main boom										Working range (m)	
	40.5	40.5	40.5	40.5	44.9	44.9	44.9	44.9	49.4	49.4		
3												3
3.5												3.5
4												4
4.5												4.5
5												5
6												6
7	68.0	67.2	67.6	35.5								7
8	59.3	56.8	55.5	32.2	54.4	55.0	38.7	35.5				8
9	46.4	44.1	42.8	30.2	45.4	43.2	36.6	33.0	42.0	41.4		9
10	37.3	35.1	33.9	28.7	36.3	34.3	34.0	30.6	36.1	35.4		10
11	30.8	28.8	27.7	26.8	29.9	28.0	31.7	28.3	29.7	29.1		11
12	26.0	24.0	23.0	25.0	25.1	23.3	26.8	26.5	24.9	24.3		12
14	19.2	17.4	16.5	22.0	18.4	16.8	20.0	21.3	18.2	17.7		14
16	14.7	12.9	12.0	17.3	13.9	12.3	15.5	16.7	13.8	13.2		16
18	11.4	9.7	8.8	14.0	10.6	9.1	12.1	13.3	10.5	9.9		18
20	8.9	7.3	6.4	11.4	8.2	6.7	9.6	10.8	8.0	7.5		20
22	7.0	5.4	4.6	9.4	6.3	4.9	7.7	8.8	6.2	5.7		22
24	5.5	3.9	3.1	7.9	4.8	3.4	6.2	7.3	4.7	4.2		24
26	4.3	2.7	1.9	6.6	3.6	2.2	5.0	6.0	3.5	3.0		26
28	3.2	1.8		5.5	2.6	1.2	3.9	5.0	2.5	2.0		28
30	2.4			4.6	1.7		3.1	4.1	1.6	1.2		30
32	1.6			3.9			2.3	3.3				32
34				3.2			1.7	2.7				34
36							1.1	2.1				36
38								1.6				38
40												40
42												42
44												44
46												46
48												48
50												50
52												52
54												54
56												56
58												58
60												60
62												62
64												64
66												66
Number of line	7	7	7	4	6	6	4	4	4	4	4	Number of line
2	45	90	90	0	90	90	45	0	90	90		2
3	45	45	90	0	45	90	45	0	90	90		3
4	45	45	45	45	45	90	45	90	45	90		4
5	45	45	45	45	45	45	45	90	45	45		5
6	45	45	0	90	45	0	45	90	45	45		6
7	45	0	0	90	45	0	90	45	45	0		7

Prerequisites:

- ① Boom operating conditions (fully extended boom length), min length is 13.8m and max length is 73m
- ② The span of outriggers is 8.2m×8.35m
- ③ 360° rotation is applied
- ④ Counterweight is 8.6T

Working range (m)	Main boom											Working range (m)
	49.4	49.4	53.8	53.8	53.8	58.2	58.2	62.7	62.7	67.1	73.0	
3												3
3.5												3.5
4												4
4.5												4.5
5												5
6												6
7												7
8												8
9	33.2	41.4										9
10	32.6	38.9	35.8	35.1	31.1							10
11	30.6	32.3	29.8	29.5	28.9	29.1	23.8					11
12	26.2	27.4	25.1	24.7	25.9	25.4	22.6	23.0	21.0			12
14	19.4	20.5	18.4	18.1	19.1	18.7	20.6	19.2	19.1	19.5		14
16	14.9	15.9	13.9	13.6	14.6	14.2	16.0	14.7	15.8	15.2	13.5	16
18	11.5	12.6	10.6	10.3	11.3	10.9	12.7	11.3	12.4	11.8	11.9	18
20	9.1	10.1	8.1	7.9	8.8	8.4	10.2	8.9	9.9	9.4	9.4	20
22	7.2	8.1	6.3	6.0	6.9	6.6	8.2	7.0	8.0	7.5	7.5	22
24	5.7	6.6	4.8	4.5	5.4	5.1	6.7	5.5	6.5	5.9	6.0	24
26	4.4	5.4	3.6	3.3	4.2	3.9	5.5	4.3	5.2	4.7	4.8	26
28	3.4	4.3	2.6	2.3	3.2	2.8	4.4	3.2	4.2	3.7	3.7	28
30	2.6	3.5	1.7	1.5	2.4	2.0	3.6	2.4	3.3	2.8	2.9	30
32	1.8	2.7			1.6	1.3	2.8	1.7	2.6	2.1	2.1	32
34	1.2	2.1					2.2		2.0	1.5	1.5	34
36		1.5					1.6		1.4			36
38												38
40												40
42												42
44												44
46												46
48												48
50												50
52												52
54												54
56												56
58												58
60												60
62												62
64												64
66												66
Number of line	4	4	4	4	3	3	3	3	2	2	2	Number of line
2	45	45	90	90	45	90	45	90	45	90	100	2
3	45	45	90	90	90	90	45	90	90	90	100	3
4	90	45	90	90	90	90	90	90	90	90	100	4
5	90	45	45	90	90	90	90	90	90	90	100	5
6	90	90	45	45	90	45	90	90	90	90	100	6
7	0	90	45	0	0	45	90	45	90	90	100	7

Prerequisites:

- ① Boom operating conditions (fully extended boom length), min length is 13.8m and max. length is 73m
- ② The span of outriggers is 8.2m×8.35m
- ③ 360° rotation is applied
- ④ Counterweight is 20.6T

Working range (m)	Main boom										Working range (m)	
	13.8	18.2	18.2	18.2	22.7	22.7	22.7	22.7	27.1	27.1		
3	200.0											3
3.5	160.0	155.0	155.0	79.5								3.5
4	150.0	145.0	145.0	70.6	140.0	140.0	73.5	51.7				4
4.5	140.0	135.0	135.0	65.2	132.0	132.0	68.3	48.9	115.0	105.0		4.5
5	130.0	126.0	126.0	61.9	123.0	123.0	63.7	45.6	110.0	98.4		5
6	110.0	112.0	112.0	57.3	109.5	110.0	57.0	41.1	107.5	88.3		6
7	93.0	94.7	98.0	52.6	95.2	97.8	51.9	37.5	96.2	80.3		7
8	71.9	70.3	73.2	48.7	70.7	73.0	47.7	34.1	71.7	70.3		8
9	56.5	55.0	55.0	44.0	55.5	57.6	43.4	31.6	56.3	55.1		9
10	45.9	44.7	47.1	42.4	45.1	47.0	40.3	29.1	45.9	44.7		10
11		36.9	39.4	39.9	37.4	39.3	36.9	27.2	38.2	37.0		11
12		30.9	33.2	35.3	31.4	33.2	34.8	25.6	32.1	31.0		12
14		22.5	24.6	26.6	23.0	24.7	27.9	22.5	23.7	22.7		14
16					17.4	19.0	22.1	20.5	18.1	17.1		16
18					13.3	14.9	17.9	18.2	14.1	13.2		18
20									11.1	10.2		20
22									8.7	7.8		22
24												24
26												26
28												28
30												30
32												32
34												34
36												36
38												38
40												40
42												42
44												44
46												46
48												48
50												50
52												52
54												54
56												56
58												58
60												60
62												62
64												64
66												66
Number of line	16	15	15	8	14	14	8	8	12	11	Number of line	
2	0	45	0	0	45	0	0	0	45	90	2	
3	0	0	0	0	45	45	0	0	45	45	3	
4	0	0	45	0	0	45	0	0	45	0	4	
5	0	0	0	0	0	0	0	0	0	0	5	
6	0	0	0	0	0	0	45	0	0	0	6	
7	0	0	0	45	0	0	45	90	0	0	7	

Prerequisites:

- ① Boom operating conditions (fully extended boom length), min length is 13.8m and max.length is 73m
- ② The span of outriggers is 8.2m×8.35m
- ③ 360° rotation is applied
- ④ Counterweight is 20.6T

Working range (m)	Main boom										Working range (m)	
	27.1	27.1	31.6	31.6	31.6	31.6	36.0	36.0	36.0	36.0		
3												3
3.5												3.5
4												4
4.5	45.0	44.8										4.5
5	42.2	42.3	105.0	87.8	53.8	35.9						5
6	37.8	38.0	105.0	79.4	48.3	32.3	92.0	72.4	66.4	72.3		6
7	34.1	34.5	95.0	73.4	44.2	29.3	85.0	63.6	60.4	63.4		7
8	31.1	31.4	72.9	67.7	40.8	27.1	74.3	56.4	54.6	56.3		8
9	28.3	28.7	57.5	55.9	37.3	25.2	58.7	51.9	51.1	51.8		9
10	26.1	26.4	47.0	45.5	34.3	23.1	48.1	45.4	47.9	46.6		10
11	24.6	24.9	39.3	37.8	31.5	21.2	40.4	37.7	42.6	38.9		11
12	22.5	22.8	33.2	31.8	30.4	20.1	34.2	31.7	36.4	32.9		12
14	19.8	20.0	24.7	23.4	26.1	17.6	25.7	23.3	27.7	24.4		14
16	17.7	17.9	19.0	17.8	22.8	15.5	20.0	17.7	21.9	18.8		16
18	15.4	15.8	15.0	13.8	18.6	13.3	15.9	13.8	17.7	14.7		18
20	13.6	13.9	12.0	10.9	15.5	11.6	12.9	10.8	14.6	11.7		20
22	13.1	13.3	9.6	8.5	13.0	10.2	10.5	8.5	12.2	9.4		22
24			7.7	6.7	11.1	9.3	8.6	6.6	10.3	7.5		24
26			6.2	5.1	9.5	9.1	7.1	5.1	8.7	6.0		26
28							5.8	3.8	7.4	4.7		28
30							4.6	2.7	6.3	3.6		30
32												32
34												34
36												36
38												38
40												40
42												42
44												44
46												46
48												48
50												50
52												52
54												54
56												56
58												58
60												60
62												62
64												64
66												66
Number of line	5	5	10	9	6	4	9	8	7	8	Number of line	
2	0	0	45	90	0	0	45	90	0	45	2	
3	0	0	45	45	0	0	45	90	45	90	3	
4	0	0	45	45	0	0	45	45	45	90	4	
5	0	0	45	0	90	0	45	0	45	0	5	
6	90	45	0	0	45	90	45	0	45	0	6	
7	45	90	0	0	45	90	0	0	45	0	7	

**SAC2200C ALL-TERRAIN CRANE
LOAD CHART**
Prerequisites:

- ① Boom operating conditions (fully extended boom length), min length is 13.8m and max.length is 73m
- ② The span of outriggers is 8.2m×8.35m
- ③ 360° rotation is applied
- ④ Counterweight is 20.6T

Working range (m)	Main boom										Working range (m)	
	40.5	40.5	40.5	40.5	44.9	44.9	44.9	44.9	49.4	49.4		
3												3
3.5												3.5
4												4
4.5												4.5
5												5
6												6
7	68.0	67.2	67.6	35.5								7
8	65.0	62.1	61.5	32.2	54.4	55.0	38.7	35.5				8
9	60.0	57.8	56.6	30.2	51.0	51.5	36.6	33.0	42.0	41.4		9
10	49.3	47.3	46.2	28.7	47.4	46.5	34.0	30.6	40.9	40.7		10
11	41.5	39.5	38.5	26.8	40.7	38.8	31.9	28.3	38.7	38.2		11
12	35.4	33.4	32.4	25.0	34.5	32.7	29.9	26.5	34.3	33.7		12
14	26.7	24.9	24.0	22.3	25.9	24.3	27.1	23.6	25.8	25.2		14
16	21.0	19.3	18.4	20.1	20.2	18.7	21.7	20.9	20.1	19.5		16
18	16.9	15.2	14.4	18.0	16.1	14.7	17.6	18.6	16.0	15.5		18
20	13.8	12.2	11.4	15.6	13.1	11.7	14.5	15.6	13.0	12.5		20
22	11.4	9.9	9.1	13.8	10.7	9.3	12.1	13.2	10.6	10.1		22
24	9.5	8.0	7.2	11.4	8.8	7.5	10.2	11.2	8.7	8.2		24
26	7.9	6.5	5.7	10.0	7.3	6.0	8.6	9.7	7.2	6.7		26
28	6.6	5.2	4.4	8.9	6.0	4.7	7.3	8.3	5.9	5.4		28
30	5.5	4.1	3.3	7.8	4.9	3.6	6.2	7.2	4.8	4.3		30
32	4.6	3.1	2.3	6.8	3.9	2.6	5.2	6.3	3.8	3.4		32
34	3.7	2.3	1.5	5.9	3.1	1.8	4.4	5.4	3.0	2.5		34
36					2.4	1.1	3.7	4.7	2.3	1.8		36
38					1.7		3.0	4.0	1.6	1.2		38
40												40
42												42
44												44
46												46
48												48
50												50
52												52
54												54
56												56
58												58
60												60
62												62
64												64
66												66
Number of line	7	7	7	4	6	6	4	4	4	4	4	Number of line
2	45	90	90	0	90	90	45	0	90	90		2
3	45	45	90	0	45	90	45	0	90	90		3
4	45	45	45	45	45	90	45	90	45	90		4
5	45	45	45	45	45	45	45	90	45	45		5
6	45	45	0	90	45	0	45	90	45	45		6
7	45	0	0	90	45	0	90	45	45	0		7

Prerequisites:

- ① Boom operating conditions (fully extended boom length), min length is 13.8m and max. length is 73m
- ② The span of outriggers is 8.2m×8.35m
- ③ 360° rotation is applied
- ④ Counterweight is 20.6T

Working range (m)	Main boom											Working range (m)
	49.4	49.4	53.8	53.8	53.8	58.2	58.2	62.7	62.7	67.1	73.0	
3												3
3.5												3.5
4												4
4.5												4.5
5												5
6												6
7												7
8												8
9	33.2	41.4										9
10	32.6	40.7	35.8	35.1	31.1							10
11	30.6	38.2	33.8	33.1	28.9	29.1	23.8					11
12	28.8	36.0	32.0	30.9	27.3	27.7	22.6	23.0	21.0			12
14	26.0	28.0	25.9	25.6	24.9	25.3	20.7	21.0	19.1	19.5		14
16	21.1	22.2	20.2	19.9	20.9	20.5	19.0	19.5	17.7	18.1	13.5	16
18	17.0	18.0	16.1	15.9	16.8	16.4	17.4	16.8	16.8	17.0	12.5	18
20	14.0	14.9	13.1	12.8	13.7	13.4	15.0	13.8	14.8	14.3	12.0	20
22	11.6	12.5	10.7	10.5	11.4	11.0	12.6	11.4	12.4	11.9	11.0	22
24	9.7	10.6	8.8	8.6	9.5	9.1	10.7	9.5	10.5	10.0	10.0	24
26	8.1	9.0	7.3	7.0	7.9	7.6	9.1	7.9	8.9	8.4	8.4	26
28	6.8	7.7	6.0	5.8	6.6	6.3	7.8	6.6	7.6	7.1	7.1	28
30	5.7	6.6	4.9	4.6	5.5	5.2	6.7	5.5	6.5	6.0	6.0	30
32	4.7	5.6	3.9	3.7	4.6	4.2	5.7	4.6	5.5	5.0	5.1	32
34	3.9	4.8	3.1	2.9	3.7	3.4	4.9	3.8	4.7	4.2	4.2	34
36	3.2	4.1	2.4	2.2	3.0	2.7	4.2	3.0	3.9	3.5	3.5	36
38	2.5	3.4	1.8	1.5	2.4	2.0	3.5	2.4	3.3	2.8	2.9	38
40	2.0	2.8	1.2	1.0	1.8	1.5	2.9	1.8	2.7	2.3	2.3	40
42	1.5	2.3			1.3		2.4	1.3	2.2	1.8	1.8	42
44							2.0		1.8	1.3	1.3	44
46							1.6		1.3			46
48							1.2					48
50												50
52												52
54												54
56												56
58												58
60												60
62												62
64												64
66												66
Number of line	4	4	4	4	3	3	3	3	2	2	2	Number of line
2	45	45	90	90	45	90	45	90	45	90	100	2
3	45	45	90	90	90	90	45	90	90	90	100	3
4	90	45	90	90	90	90	90	90	90	90	100	4
5	90	45	45	90	90	90	90	90	90	90	100	5
6	90	90	45	45	90	45	90	90	90	90	100	6
7	0	90	45	0	0	45	90	45	90	90	100	7

**SAC2200C ALL-TERRAIN CRANE
LOAD CHART**
Prerequisites:

- ① Boom operating conditions (fully extended boom length), min length is 13.8m and max. length is 73m
- ② The span of outriggers is 8.2m×8.35m
- ③ 360° rotation is applied
- ④ Counterweight is 31.6T

Working range (m)	Main boom										Working range (m)	
	13.8	18.2	18.2	18.2	22.7	22.7	22.7	22.7	27.1	27.1		
3	220.0											3
3.5	160.0	155.0	155.0	79.5								3.5
4	150.0	145.0	145.0	70.6	140.0	140.0	73.5	51.7				4
4.5	140.0	135.0	135.0	65.2	132.0	132.0	68.3	48.9	115.0	105.0		4.5
5	130.0	126.0	126.0	61.9	123.0	123.0	63.7	45.6	110.0	98.4		5
6	115.0	112.0	112.0	57.3	109.5	110.0	57.0	41.1	107.5	88.3		6
7	99.0	100.5	100.5	52.6	98.5	99.0	51.9	37.5	96.5	80.3		7
8	84.0	85.3	88.2	48.7	85.8	88.1	47.7	34.1	86.7	73.1		8
9	68.7	67.3	67.0	44.0	67.7	69.8	43.4	31.6	68.6	67.3		9
10	56.2	54.9	57.4	42.4	55.4	57.3	40.3	29.1	56.2	55.0		10
11		46.0	48.3	39.9	46.4	48.2	36.9	27.2	47.2	46.1		11
12		39.2	41.4	37.9	39.6	41.4	34.8	25.6	40.3	39.3		12
14		29.3	31.5	33.4	29.8	31.6	30.7	22.5	30.6	29.6		14
16					23.1	24.7	27.8	20.5	23.8	22.9		16
18					18.2	19.8	22.8	18.2	19.0	18.1		18
20									15.4	14.5		20
22									12.5	11.7		22
24												24
26												26
28												28
30												30
32												32
34												34
36												36
38												38
40												40
42												42
44												44
46												46
48												48
50												50
52												52
54												54
56												56
58												58
60												60
62												62
64												64
66												66
Number of line	16	15	15	8	14	14	8	8	12	11	Number of line	
2	0	45	0	0	45	0	0	0	45	90	2	
3	0	0	0	0	45	45	0	0	45	45	3	
4	0	0	45	0	0	45	0	0	45	0	4	
5	0	0	0	0	0	0	0	0	0	0	5	
6	0	0	0	0	0	0	45	0	0	0	6	
7	0	0	0	45	0	0	45	90	0	0	7	

Prerequisites:

- ① Boom operating conditions (fully extended boom length), min length is 13.8m and max.length is 73m
- ② The span of outriggers is 8.2m×8.35m
- ③ 360° rotation is applied
- ④ Counterweight is 31.6T

Working range (m)	Main boom										Working range (m)	
	27.1	27.1	31.6	31.6	31.6	31.6	36.0	36.0	36.0	36.0		
3												3
3.5												3.5
4												4
4.5	45.0	44.8										4.5
5	42.2	42.3	100.0	87.8	53.8	35.9						5
6	37.8	38.0	100.0	79.4	48.3	32.3	92.0	72.4	66.4	72.3		6
7	34.1	34.5	95.0	73.4	44.2	29.3	85.0	63.6	60.4	63.4		7
8	31.1	31.4	87.0	67.7	40.8	27.1	78.0	56.4	54.6	56.3		8
9	28.3	28.7	69.7	62.0	37.3	25.2	71.0	51.9	51.1	51.8		9
10	26.1	26.4	57.3	55.8	34.3	23.1	58.4	48.0	47.9	47.4		10
11	24.6	24.9	48.2	46.8	31.5	21.2	49.3	45.3	46.0	44.8		11
12	22.5	22.8	41.3	40.0	30.4	20.1	42.4	39.9	44.4	41.0		12
14	19.8	20.0	31.6	30.3	26.1	17.6	32.5	30.2	34.5	31.3		14
16	17.7	17.9	24.8	23.5	23.4	15.5	25.7	23.5	27.6	24.5		16
18	15.4	15.8	19.9	18.7	20.1	13.3	20.8	18.7	22.6	19.6		18
20	13.6	13.9	16.3	15.1	17.2	11.6	17.2	15.1	18.9	16.0		20
22	13.1	13.3	13.4	12.3	15.3	10.2	14.3	12.3	16.0	13.2		22
24			11.2	10.1	13.9	9.3	12.0	10.1	13.7	11.0		24
26			9.3	8.2	12.6	9.1	10.2	8.2	11.8	9.1		26
28							8.6	6.7	10.3	7.6		28
30							7.3	5.4	8.9	6.3		30
32												32
34												34
36												36
38												38
40												40
42												42
44												44
46												46
48												48
50												50
52												52
54												54
56												56
58												58
60												60
62												62
64												64
66												66
Number of line	5	5	10	9	6	4	9	8	7	8	Number of line	
2	0	0	45	90	0	0	45	90	0	45	2	
3	0	0	45	45	0	0	45	90	45	90	3	
4	0	0	45	45	0	0	45	45	45	90	4	
5	0	0	45	0	90	0	45	0	45	0	5	
6	90	45	0	0	45	90	45	0	45	0	6	
7	45	90	0	0	45	90	0	0	45	0	7	

**SAC2200C ALL-TERRAIN CRANE
LOAD CHART**
Prerequisites:

- ① Boom operating conditions (fully extended boom length), min length is 13.8m and max.length is 73m
- ② The span of outriggers is 8.2m×8.35m
- ③ 360° rotation is applied
- ④ Counterweight is 31.6T

Working range (m)	Main boom										Working range (m)	
	40.5	40.5	40.5	40.5	44.9	44.9	44.9	44.9	49.4	49.4		
3												3
3.5												3.5
4												4
4.5												4.5
5												5
6												6
7	68.0	67.2	67.6	35.5								7
8	65.0	62.1	61.5	32.2	54.4	55.0	38.7	35.5				8
9	62.0	58.2	57.7	30.2	51.0	51.5	36.6	33.0	42.0	41.4		9
10	59.0	54.4	54.0	28.7	47.4	47.9	34.0	30.6	40.9	40.7		10
11	50.4	48.5	47.4	26.8	44.5	44.6	31.9	28.3	38.7	38.2		11
12	43.4	41.6	40.6	25.0	41.7	40.9	29.9	26.5	36.2	36.0		12
14	33.5	31.8	30.9	22.3	32.8	31.2	27.1	23.6	32.6	32.1		14
16	26.7	25.0	24.1	20.1	25.9	24.4	24.1	20.9	25.8	25.2		16
18	21.8	20.1	19.3	18.0	21.0	19.6	21.8	18.6	20.9	20.4		18
20	18.1	16.5	15.7	15.6	17.4	16.0	18.8	16.1	17.3	16.7		20
22	15.2	13.7	12.9	13.8	14.5	13.2	15.9	15.2	14.4	13.9		22
24	12.9	11.4	10.6	11.4	12.3	10.9	13.6	13.6	12.1	11.7		24
26	11.1	9.6	8.8	10.0	10.4	9.1	11.7	12.8	10.3	9.8		26
28	9.5	8.0	7.3	9.6	8.9	7.5	10.2	11.2	8.7	8.3		28
30	8.2	6.7	6.0	8.4	7.5	6.2	8.8	9.8	7.4	7.0		30
32	7.0	5.6	4.8	7.6	6.4	5.1	7.7	8.7	6.3	5.9		32
34	6.0	4.6	3.9	7.2	5.4	4.2	6.7	7.7	5.3	4.9		34
36					4.6	3.3	5.8	6.8	4.5	4.0		36
38					3.8	2.6	5.1	6.0	3.7	3.3		38
40									3.1	2.6		40
42									2.5	2.0		42
44												44
46												46
48												48
50												50
52												52
54												54
56												56
58												58
60												60
62												62
64												64
66												66
Number of line	7	7	7	4	6	6	4	4	4	4	4	Number of line
2	45	90	90	0	90	90	45	0	90	90		2
3	45	45	90	0	45	90	45	0	90	90		3
4	45	45	45	45	45	90	45	90	45	90		4
5	45	45	45	45	45	45	45	90	45	45		5
6	45	45	0	90	45	0	45	90	45	45		6
7	45	0	0	90	45	0	90	45	45	0		7

Prerequisites:

- ① Boom operating conditions (fully extended boom length), min length is 13.8m and max. length is 73m
- ② The span of outriggers is 8.2m×8.35m
- ③ 360° rotation is applied
- ④ Counterweight is 31.6T

Working range (m)	Main boom											Working range (m)
	49.4	49.4	53.8	53.8	53.8	58.2	58.2	62.7	62.7	67.1	73.0	
3												3
3.5												3.5
4												4
4.5												4.5
5												5
6												6
7												7
8												8
9	33.2	41.4										9
10	32.6	40.7	35.8	35.1	31.1							10
11	30.6	38.2	33.8	33.1	28.9	29.1	23.8					11
12	28.8	36.0	32.0	30.9	27.3	27.7	22.6	23.0	21.0			12
14	26.0	32.3	28.7	28.1	24.9	25.3	20.7	21.0	19.1	19.5		14
16	23.0	27.9	25.9	25.3	22.6	23.1	19.0	19.5	17.7	18.1	13.5	16
18	20.7	22.9	21.0	20.8	20.8	21.2	17.4	18.5	16.8	17.0	12.5	18
20	18.2	19.2	17.4	17.1	18.0	17.6	16.0	17.0	15.4	15.9	12.0	20
22	15.4	16.3	14.5	14.3	15.2	14.8	14.7	15.2	14.5	14.9	11.0	22
24	13.1	14.0	12.2	12.0	12.9	12.5	13.6	12.9	13.6	13.4	10.5	24
26	11.2	12.1	10.4	10.2	11.0	10.7	12.2	11.1	12.0	11.5	10.0	26
28	9.7	10.6	8.8	8.6	9.5	9.1	10.7	9.5	10.4	9.9	9.5	28
30	8.3	9.2	7.5	7.3	8.2	7.8	9.3	8.2	9.1	8.6	8.5	30
32	7.2	8.1	6.4	6.2	7.0	6.7	8.2	7.1	8.0	7.5	7.5	32
34	6.2	7.1	5.4	5.2	6.0	5.7	7.2	6.1	7.0	6.5	6.5	34
36	5.4	6.2	4.6	4.4	5.2	4.9	6.3	5.2	6.1	5.6	5.7	36
38	4.6	5.5	3.8	3.6	4.4	4.1	5.6	4.5	5.4	4.9	5.0	38
40	3.9	4.8	3.2	2.9	3.8	3.4	4.9	3.8	4.7	4.2	4.5	40
42	3.3	4.2	2.6	2.3	3.2	2.8	4.3	3.2	4.1	3.6	3.5	42
44			2.0	1.8	2.6	2.3	3.7	2.7	3.5	3.1	3.0	44
46			1.5	1.3	2.1	1.8	3.2	2.2	3.0	2.6	2.5	46
48						1.4	2.8	1.7	2.6	2.1	2.0	48
50							2.4	1.3	2.2	1.7	1.5	50
52							2.0		1.8	1.4	1.4	52
54									1.4			54
56												56
58												58
60												60
62												62
64												64
66												66
Number of line	4	4	4	4	3	3	3	3	2	2	2	Number of line
2	45	45	90	90	45	90	45	90	45	90	100	2
3	45	45	90	90	90	90	45	90	90	90	100	3
4	90	45	90	90	90	90	90	90	90	90	100	4
5	90	45	45	90	90	90	90	90	90	90	100	5
6	90	90	45	45	90	45	90	90	90	90	100	6
7	0	90	45	0	0	45	90	45	90	90	100	7

Prerequisites:

- ① Boom operating conditions (fully extended boom length), min length is 13.8m and max. length is 73m
- ② The span of outriggers is 8.2m×8.35m
- ③ 360° rotation is applied
- ④ Counterweight is 42.6T

Working range (m)	Main boom										Working range (m)	
	13.8	18.2	18.2	18.2	22.7	22.7	22.7	22.7	27.1	27.1		
3	220.0											3
3.5	160.0	155.0	155.0	79.5								3.5
4	150.0	145.0	145.0	70.6	140.0	140.0	73.5	51.7				4
4.5	140.0	135.0	135.0	65.2	132.0	132.0	68.3	48.9	115.0	105.0		4.5
5	130.0	126.0	126.0	61.9	123.0	123.0	63.7	45.6	110.0	98.4		5
6	115.0	112.0	112.0	57.3	109.5	110.0	57.0	41.1	107.5	88.3		6
7	102.5	100.5	100.5	52.6	98.5	99.0	51.9	37.5	96.5	80.3		7
8	89.5	91.0	91.0	48.7	89.0	90.0	47.7	34.1	88.0	73.1		8
9	78.0	79.5	80.0	44.0	79.9	82.0	43.4	31.6	80.6	67.9		9
10	66.5	65.2	67.7	42.4	65.6	67.6	40.3	29.1	66.5	62.4		10
11		54.9	57.2	39.9	55.3	57.1	36.9	27.2	56.0	55.0		11
12		47.0	49.2	37.9	47.4	49.2	34.8	25.6	48.1	47.1		12
14		35.7	37.8	33.8	36.2	37.9	30.7	22.5	36.9	36.0		14
16					28.6	30.2	27.8	20.5	29.4	28.4		16
18					23.1	24.7	24.5	18.2	23.9	23.0		18
20									19.7	18.8		20
22									16.3	15.5		22
24												24
26												26
28												28
30												30
32												32
34												34
36												36
38												38
40												40
42												42
44												44
46												46
48												48
50												50
52												52
54												54
56												56
58												58
60												60
62												62
64												64
66												66
Number of line	16	15	15	8	14	14	8	8	12	11	Number of line	
2	0	45	0	0	45	0	0	0	45	90	2	
3	0	0	0	0	45	45	0	0	45	45	3	
4	0	0	45	0	0	45	0	0	45	0	4	
5	0	0	0	0	0	0	0	0	0	0	5	
6	0	0	0	0	0	0	45	0	0	0	6	
7	0	0	0	45	0	0	45	90	0	0	7	

Prerequisites:

- ① Boom operating conditions (fully extended boom length), min length is 13.8m and max. length is 73m
- ② The span of outriggers is 8.2m×8.35m
- ③ 360° rotation is applied
- ④ Counterweight is 42.6T

Working range (m)	Main boom										Working range (m)	
	27.1	27.1	31.6	31.6	31.6	31.6	36.0	36.0	36.0	36.0		
3												3
3.5												3.5
4												4
4.5	45.0	44.8										4.5
5	42.2	42.3	105.0	87.8	53.8	35.9						5
6	37.8	38.0	105.0	79.4	48.3	32.3	92.0	72.4	66.4	72.3		6
7	34.1	34.5	95.0	73.4	44.2	29.3	85.0	63.6	60.4	63.4		7
8	31.1	31.4	87.0	67.7	40.8	27.1	78.0	56.4	54.6	56.3		8
9	28.3	28.7	79.3	62.0	37.3	25.2	71.0	51.9	51.1	51.8		9
10	26.1	26.4	67.6	57.5	34.3	23.1	65.0	48.0	47.9	47.4		10
11	24.6	24.9	57.1	52.7	31.5	21.2	58.2	45.3	46.0	44.8		11
12	22.5	22.8	49.1	47.8	30.4	20.1	50.2	43.8	44.5	42.6		12
14	19.8	20.0	37.9	36.6	26.1	17.6	38.8	36.6	40.8	37.6		14
16	17.7	17.9	30.3	29.1	23.4	15.5	31.2	29.0	33.0	30.0		16
18	15.4	15.8	24.8	23.6	20.1	13.3	25.7	23.6	27.4	24.5		18
20	13.6	13.9	20.6	19.4	17.2	11.6	21.4	19.4	23.2	20.3		20
22	13.1	13.3	17.2	16.1	15.3	10.2	18.1	16.1	19.9	17.0		22
24			14.6	13.5	13.9	9.3	15.5	13.5	17.2	14.4		24
26			12.4	11.3	13.5	9.1	13.3	11.3	15.0	12.2		26
28							11.5	9.5	13.1	10.4		28
30							9.9	8.0	11.6	8.9		30
32												32
34												34
36												36
38												38
40												40
42												42
44												44
46												46
48												48
50												50
52												52
54												54
56												56
58												58
60												60
62												62
64												64
66												66
Number of line	5	5	10	9	6	4	9	8	7	8		Number of line
2	0	0	45	90	0	0	45	90	0	45		2
3	0	0	45	45	0	0	45	90	45	90		3
4	0	0	45	45	0	0	45	45	45	90		4
5	0	0	45	0	90	0	45	0	45	0		5
6	90	45	0	0	45	90	45	0	45	0		6
7	45	90	0	0	45	90	0	0	45	0		7

**SAC2200C ALL-TERRAIN CRANE
LOAD CHART**
Prerequisites:

- ① Boom operating conditions (fully extended boom length), min length is 13.8m and max. length is 73m
- ② The span of outriggers is 8.2m×8.35m
- ③ 360° rotation is applied
- ④ Counterweight is 42.6T

Working range (m)	Main boom										Working range (m)	
	40.5	40.5	40.5	40.5	44.9	44.9	44.9	44.9	49.4	49.4		
3												3
3.5												3.5
4												4
4.5												4.5
5												5
6												6
7	68.0	67.2	67.6	35.5								7
8	65.0	62.1	61.5	32.2	54.4	55.0	38.7	35.5				8
9	62.0	58.2	57.7	30.2	51.0	51.5	36.6	33.0	42.0	41.4		9
10	59.0	54.4	54.0	28.7	47.4	47.9	34.0	30.6	40.9	40.7		10
11	56.0	50.8	51.2	26.8	44.5	44.6	31.9	28.3	38.7	38.2		11
12	51.2	47.3	46.9	25.0	41.7	41.8	29.9	26.5	36.2	36.0		12
14	39.8	38.1	37.2	22.3	37.1	37.5	27.1	23.6	32.8	32.3		14
16	32.1	30.5	29.6	20.1	31.4	29.9	24.1	20.9	29.3	28.9		16
18	26.6	25.0	24.2	18.0	25.9	24.5	21.8	18.6	25.8	25.2		18
20	22.4	20.8	20.0	15.6	21.7	20.2	19.3	16.1	21.5	21.0		20
22	19.0	17.5	16.7	13.8	18.3	17.0	18.2	15.2	18.2	17.7		22
24	16.4	14.9	14.0	11.4	15.7	14.3	16.5	13.6	15.6	15.1		24
26	14.2	12.7	11.9	10.0	13.5	12.2	14.8	12.8	13.4	12.9		26
28	12.3	10.9	10.1	9.6	11.7	10.4	13.0	11.6	11.6	11.1		28
30	10.8	9.4	8.6	8.4	10.2	8.9	11.5	10.6	10.1	9.6		30
32	9.5	8.1	7.3	7.6	8.9	7.6	10.1	10.0	8.8	8.3		32
34	8.3	6.9	6.1	7.2	7.7	6.4	9.0	9.0	7.6	7.2		34
36					6.7	5.4	8.0	8.6	6.6	6.2		36
38					5.8	4.6	7.1	7.9	5.7	5.3		38
40									5.0	4.5		40
42									4.2	3.8		42
44												44
46												46
48												48
50												50
52												52
54												54
56												56
58												58
60												60
62												62
64												64
66												66
Number of line	7	7	7	4	6	6	4	4	4	4	4	Number of line
2	45	90	90	0	90	90	45	0	90	90		2
3	45	45	90	0	45	90	45	0	90	90		3
4	45	45	45	45	45	90	45	90	45	90		4
5	45	45	45	45	45	45	45	90	45	45		5
6	45	45	0	90	45	0	45	90	45	45		6
7	45	0	0	90	45	0	90	45	45	0		7

Prerequisites:

- ① Boom operating conditions (fully extended boom length), min length is 13.8m and max. length is 73m
- ② The span of outriggers is 8.2m×8.35m
- ③ 360° rotation is applied
- ④ Counterweight is 42.6T

Working range (m)	Main boom											Working range (m)
	49.4	49.4	53.8	53.8	53.8	58.2	58.2	62.7	62.7	67.1	73.0	
3												3
3.5												3.5
4												4
4.5												4.5
5												5
6												6
7												7
8												8
9	33.2	41.4										9
10	32.6	40.7	35.8	35.1	31.1							10
11	30.6	38.2	33.8	33.1	28.9	29.1	23.8					11
12	28.8	36.0	32.0	30.9	27.3	27.7	22.6	23.0	21.0			12
14	26.0	32.3	28.7	28.1	24.9	25.3	20.7	21.0	19.1	19.5		14
16	23.0	28.9	26.0	25.3	22.6	23.1	19.0	19.5	17.7	18.1	13.5	16
18	20.7	26.1	23.6	23.4	20.8	21.2	17.4	18.5	16.8	17.0	12.5	18
20	19.2	23.5	21.6	21.2	19.0	19.5	16.0	17.0	15.4	15.9	12.0	20
22	17.1	20.1	18.3	18.1	17.3	18.0	14.7	16.0	14.5	14.9	11.0	22
24	16.0	17.5	15.7	15.4	16.2	15.9	13.6	15.0	13.6	14.0	10.5	24
26	14.3	15.3	13.5	13.3	14.1	13.8	12.5	14.0	12.7	13.1	10.0	26
28	12.5	13.4	11.7	11.5	12.3	12.0	11.5	12.4	11.9	12.3	9.5	28
30	11.0	11.9	10.2	9.9	10.8	10.4	10.7	10.8	11.0	11.3	9.0	30
32	9.7	10.5	8.9	8.6	9.5	9.1	9.9	9.5	10.3	9.9	8.5	32
34	8.5	9.4	7.7	7.5	8.3	8.0	9.2	8.4	9.3	8.8	8.0	34
36	7.5	8.4	6.7	6.5	7.3	7.0	8.5	7.4	8.3	7.8	7.5	36
38	6.6	7.5	5.8	5.6	6.4	6.1	7.6	6.5	7.4	6.9	6.9	38
40	5.8	6.7	5.1	4.8	5.7	5.3	6.8	5.7	6.6	6.1	6.2	40
42	5.1	6.0	4.4	4.1	5.0	4.6	6.1	5.0	5.9	5.4	5.5	42
44			3.7	3.5	4.3	4.0	5.4	4.4	5.2	4.8	4.8	44
46			3.2	2.9	3.7	3.4	4.9	3.8	4.7	4.2	4.3	46
48						2.9	4.3	3.3	4.1	3.7	3.7	48
50						2.4	3.9	2.8	3.7	3.2	3.3	50
52						2.0	3.4	2.4	3.2	2.8	2.8	52
54								2.0	2.8	2.4	2.4	54
56								1.6	2.4	2.0	2.1	56
58										1.7	1.7	58
60										1.3	1.4	60
62											1.1	62
64												64
66												66
Number of line	4	4	4	4	3	3	3	3	2	2	2	Number of line
2	45	45	90	90	45	90	45	90	45	90	100	2
3	45	45	90	90	90	90	45	90	90	90	100	3
4	90	45	90	90	90	90	90	90	90	90	100	4
5	90	45	45	90	90	90	90	90	90	90	100	5
6	90	90	45	45	90	45	90	90	90	90	100	6
7	0	90	45	0	0	45	90	45	90	90	100	7

Prerequisites:

- ① Boom operating conditions (fully extended boom length), min length is 13.8m and max. length is 73m
- ② The span of outriggers is 8.2m×8.35m
- ③ 360° rotation is applied
- ④ Counterweight is 53.6T

Working range (m)	Main boom										Working range (m)	
	13.8	18.2	18.2	18.2	22.7	22.7	22.7	22.7	27.1	27.1		
3	220.0											3
3.5	160.0	155.0	155.0	79.5								3.5
4	150.0	145.0	145.0	70.6	140.0	140.0	73.5	51.7				4
4.5	140.0	135.0	135.0	65.2	132.0	132.0	68.3	48.9	115.0	105.0		4.5
5	130.0	126.0	126.0	61.9	123.0	123.0	63.7	45.6	110.0	98.4		5
6	115.0	112.0	112.0	57.3	109.5	110.0	57.0	41.1	107.5	88.3		6
7	102.5	100.5	100.5	52.6	98.5	99.0	51.9	37.5	96.5	80.3		7
8	91.5	91.0	91.0	48.7	89.0	90.0	47.7	34.1	88.0	73.1		8
9	80.5	82.5	80.0	44.0	81.5	82.0	43.4	31.6	80.6	67.9		9
10	68.5	75.5	76.0	42.4	75.0	75.0	40.3	29.1	74.0	62.4		10
11		63.7	66.1	39.9	64.1	66.0	36.9	27.2	64.9	57.7		11
12		54.8	57.0	37.9	55.2	57.0	34.8	25.6	56.0	54.0		12
14		42.0	44.1	33.8	42.5	44.2	30.7	22.5	43.2	42.2		14
16					33.9	35.5	27.8	20.5	34.6	33.7		16
18					27.7	29.2	24.5	18.2	28.4	27.5		18
20									23.7	22.9		20
22									20.0	19.2		22
24												24
26												26
28												28
30												30
32												32
34												34
36												36
38												38
40												40
42												42
44												44
46												46
48												48
50												50
52												52
54												54
56												56
58												58
60												60
62												62
64												64
66												66
Number of line	16	15	15	8	14	14	8	8	12	11	Number of line	
2	0	45	0	0	45	0	0	0	45	90	2	
3	0	0	0	0	45	45	0	0	45	45	3	
4	0	0	45	0	0	45	0	0	45	0	4	
5	0	0	0	0	0	0	0	0	0	0	5	
6	0	0	0	0	0	0	45	0	0	0	6	
7	0	0	0	45	0	0	45	90	0	0	7	

Prerequisites:

- ① Boom operating conditions (fully extended boom length), min length is 13.8m and max. length is 73m
- ② The span of outriggers is 8.2m×8.35m
- ③ 360° rotation is applied
- ④ Counterweight is 53.6T

Working range (m)	Main boom										Working range (m)	
	27.1	27.1	31.6	31.6	31.6	31.6	36.0	36.0	36.0	36.0		
3												3
3.5												3.5
4												4
4.5	45.0	44.8										4.5
5	42.2	42.3	100.0	87.8	53.8	35.9						5
6	37.8	38.0	100.0	79.4	48.3	32.3	92.0	72.4	66.4	72.3		6
7	34.1	34.5	95.0	73.4	44.2	29.3	85.0	63.6	60.4	63.4		7
8	31.1	31.4	87.0	67.7	40.8	27.1	78.0	56.4	54.6	56.3		8
9	28.3	28.7	79.3	62.0	37.3	25.2	71.0	51.9	51.1	51.8		9
10	26.1	26.4	73.0	57.5	34.3	23.1	65.0	48.0	47.9	47.4		10
11	24.6	24.9	66.0	52.7	31.5	21.2	62.0	45.3	46.0	44.8		11
12	22.5	22.8	56.9	50.9	30.4	20.1	58.0	43.8	44.5	42.6		12
14	19.8	20.0	44.2	42.9	26.1	17.6	45.1	42.2	43.7	40.4		14
16	17.7	17.9	35.5	34.4	23.4	15.5	36.4	34.3	36.3	33.3		16
18	15.4	15.8	29.3	28.2	20.1	13.3	30.2	28.1	32.0	29.1		18
20	13.6	13.9	24.6	23.5	17.2	11.6	25.5	23.5	27.2	24.4		20
22	13.1	13.3	20.9	19.8	15.3	10.2	21.8	19.8	23.5	20.7		22
24			18.0	16.9	13.9	9.3	18.8	16.9	20.5	17.8		24
26			15.5	14.5	13.5	9.1	16.4	14.4	18.0	15.3		26
28							14.3	12.4	16.0	13.3		28
30							12.6	10.6	14.2	11.5		30
32												32
34												34
36												36
38												38
40												40
42												42
44												44
46												46
48												48
50												50
52												52
54												54
56												56
58												58
60												60
62												62
64												64
66												66
Number of line	5	5	10	9	6	4	9	8	7	8	Number of line	
2	0	0	45	90	0	0	45	90	0	45	2	
3	0	0	45	45	0	0	45	90	45	90	3	
4	0	0	45	45	0	0	45	45	45	90	4	
5	0	0	45	0	90	0	45	0	45	0	5	
6	90	45	0	0	45	90	45	0	45	0	6	
7	45	90	0	0	45	90	0	0	45	0	7	

**SAC2200C ALL-TERRAIN CRANE
LOAD CHART**
Prerequisites:

- ① Boom operating conditions (fully extended boom length), min length is 13.8m and max. length is 73m
- ② The span of outriggers is 8.2m×8.35m
- ③ 360° rotation is applied
- ④ Counterweight is 53.6T

Working range (m)	Main boom										Working range (m)	
	40.5	40.5	40.5	40.5	44.9	44.9	44.9	44.9	49.4	49.4		
3												3
3.5												3.5
4												4
4.5												4.5
5												5
6												6
7	68.0	67.2	67.6	35.5								7
8	65.0	62.1	61.5	32.2	54.4	55.0	38.7	35.5				8
9	62.0	58.2	57.7	30.2	51.0	51.5	36.6	33.0	42.0	41.4		9
10	59.0	54.4	54.0	28.7	47.4	47.9	34.0	30.6	40.9	40.7		10
11	56.0	50.8	51.2	26.8	44.5	44.6	31.9	28.3	38.7	38.2		11
12	53.0	47.3	46.9	25.0	41.7	41.8	29.9	26.5	36.2	36.0		12
14	46.1	43.0	43.3	22.3	37.1	37.5	27.1	23.6	32.8	32.3		14
16	37.4	35.8	34.9	20.1	33.1	33.5	24.1	20.9	29.3	28.9		16
18	31.1	29.5	28.7	18.0	30.0	29.0	21.8	18.6	26.5	26.1		18
20	26.4	24.8	24.0	15.6	25.7	24.3	19.3	16.1	24.2	23.9		20
22	22.7	21.2	20.4	13.8	22.0	20.6	18.2	15.2	21.9	21.4		22
24	19.7	18.2	17.4	11.4	19.0	17.7	16.5	13.6	18.9	18.4		24
26	17.2	15.8	15.0	10.0	16.6	15.3	15.6	12.8	16.5	16.0		26
28	15.2	13.7	13.0	9.6	14.6	13.2	14.5	11.6	14.4	14.0		28
30	13.4	12.0	11.2	8.4	12.8	11.5	13.5	10.6	12.7	12.2		30
32	11.9	10.5	9.7	7.6	11.3	10.0	12.5	10.0	11.2	10.7		32
34	10.6	9.2	8.4	7.2	10.0	8.7	11.3	9.0	9.9	9.4		34
36					8.9	7.6	10.1	8.6	8.8	8.3		36
38					7.8	6.6	9.1	7.9	7.7	7.3		38
40									6.9	6.4		40
42									6.0	5.6		42
44												44
46												46
48												48
50												50
52												52
54												54
56												56
58												58
60												60
62												62
64												64
66												66
Number of line	7	7	7	4	6	6	4	4	4	4	4	Number of line
2	45	90	90	0	90	90	45	0	90	90		2
3	45	45	90	0	45	90	45	0	90	90		3
4	45	45	45	45	45	90	45	90	45	90		4
5	45	45	45	45	45	45	45	90	45	45		5
6	45	45	0	90	45	0	45	90	45	45		6
7	45	0	0	90	45	0	90	45	45	0		7

Prerequisites:

- ① Boom operating conditions (fully extended boom length), min length is 13.8m and max. length is 73m
- ② The span of outriggers is 8.2m×8.35m
- ③ 360° rotation is applied
- ④ Counterweight is 53.6T

Working range (m)	Main boom											Working range (m)
	49.4	49.4	53.8	53.8	53.8	58.2	58.2	62.7	62.7	67.1	73.0	
3												3
3.5												3.5
4												4
4.5												4.5
5												5
6												6
7												7
8												8
9	33.2	41.4										9
10	32.6	40.7	35.8	35.1	31.1							10
11	30.6	38.2	33.8	33.1	28.9	29.1	23.8					11
12	28.8	36.0	32.0	30.9	27.3	27.7	22.6	23.0	21.0			12
14	26.0	32.3	28.7	28.1	24.9	25.3	20.7	21.0	19.1	19.5		14
16	23.0	28.9	26.0	25.3	22.6	23.1	19.0	19.5	17.7	18.1	13.5	16
18	20.7	26.1	23.6	23.4	20.8	21.2	17.4	18.5	16.8	17.0	12.5	18
20	19.2	23.9	21.8	21.2	19.0	19.5	16.0	17.0	15.4	15.9	12.0	20
22	17.1	21.4	19.7	19.1	17.3	18.0	14.7	16.0	14.5	14.9	11.0	22
24	16.0	19.8	18.2	18.0	16.2	16.6	13.6	15.0	13.6	14.0	10.5	24
26	14.5	17.9	16.6	16.4	15.0	15.3	12.5	14.0	12.7	13.1	10.0	26
28	13.4	16.3	14.5	14.3	13.6	14.1	11.5	13.1	11.9	12.3	9.5	28
30	12.2	14.5	12.8	12.6	12.5	13.0	10.7	12.1	11.0	11.4	9.0	30
32	11.4	13.0	11.3	11.1	11.5	11.6	9.9	11.3	10.3	10.7	8.5	32
34	10.5	11.7	10.0	9.8	10.6	10.3	9.2	10.5	9.6	10.0	8.0	34
36	9.5	10.5	8.9	8.6	9.5	9.1	8.5	9.5	9.0	9.3	7.5	36
38	8.6	9.5	7.9	7.6	8.5	8.1	8.0	8.5	8.6	8.6	7.0	38
40	7.7	8.6	7.0	6.7	7.6	7.2	7.5	7.6	8.0	8.0	6.5	40
42	6.9	7.8	6.2	5.9	6.8	6.4	7.0	6.8	7.2	7.2	6.0	42
44			5.4	5.2	6.0	5.7	6.5	6.1	6.9	6.5	5.5	44
46			4.8	4.6	5.4	5.0	6.1	5.4	6.3	5.8	5.0	46
48						4.5	5.6	4.8	5.7	5.2	5.0	48
50						3.9	5.3	4.3	5.1	4.7	4.5	50
52						3.4	4.8	3.8	4.6	4.2	4.2	52
54								3.3	4.2	3.7	3.8	54
56								2.9	3.8	3.3	3.4	56
58										2.9	3.0	58
60										2.6	2.6	60
62											2.3	62
64											1.9	64
66											1.6	66
Number of line	4	4	4	4	3	3	3	3	2	2	2	Number of line
2	45	45	90	90	45	90	45	90	45	90	100	2
3	45	45	90	90	90	90	45	90	90	90	100	3
4	90	45	90	90	90	90	90	90	90	90	100	4
5	90	45	45	90	90	90	90	90	90	90	100	5
6	90	90	45	45	90	45	90	90	90	90	100	6
7	0	90	45	0	0	45	90	45	90	90	100	7

**SAC2200C ALL-TERRAIN CRANE
LOAD CHART**
Prerequisites:

- ① Boom operating conditions (fully extended boom length), min length is 13.8m and max. length is 73m
- ② The span of outriggers is 8.2m×8.35m
- ③ 360° rotation is applied
- ④ Counterweight is 76.6T

Working range (m)	Main boom										Working range (m)	
	13.8	18.2	18.2	18.2	22.7	22.7	22.7	22.7	27.1	27.1		
3	220.0											3
3.5	160.0	155.0	155.0	79.5								3.5
4	150.0	145.0	145.0	70.6	140.0	140.0	73.5	51.7				4
4.5	140.0	135.0	135.0	65.2	132.0	132.0	68.3	48.9	115.0	105.0		4.5
5	130.0	126.0	126.0	61.9	123.0	123.0	63.7	45.6	110.0	98.4		5
6	115.0	112.0	112.0	57.3	109.5	110.0	57.0	41.1	107.5	88.3		6
7	102.5	100.5	100.5	52.6	98.5	99.0	51.9	37.5	96.5	80.3		7
8	91.5	91.0	91.0	48.7	89.0	90.0	47.7	34.1	88.0	73.1		8
9	80.5	82.5	83.0	44.0	81.5	82.0	43.4	31.6	80.6	67.9		9
10	68.5	75.5	76.0	42.4	75.0	75.0	40.3	29.1	74.0	62.4		10
11		68.5	69.5	39.9	69.0	69.0	36.9	27.2	68.5	57.7		11
12		62.0	63.0	37.9	63.5	64.0	34.8	25.6	63.7	54.0		12
14		48.0	49.0	33.8	54.5	55.5	30.7	22.5	55.0	47.5		14
16					44.9	46.5	27.8	20.5	45.7	42.3		16
18					36.3	37.6	24.5	18.2	37.9	37.0		18
20									32.1	31.2		20
22									27.5	26.6		22
24												24
26												26
28												28
30												30
32												32
34												34
36												36
38												38
40												40
42												42
44												44
46												46
48												48
50												50
52												52
54												54
56												56
58												58
60												60
62												62
64												64
66												66
Number of line	16	15	15	8	14	14	8	8	12	11	Number of line	
2	0	45	0	0	45	0	0	0	45	90	2	
3	0	0	0	0	45	45	0	0	45	45	3	
4	0	0	45	0	0	45	0	0	45	0	4	
5	0	0	0	0	0	0	0	0	0	0	5	
6	0	0	0	0	0	0	45	0	0	0	6	
7	0	0	0	45	0	0	45	90	0	0	7	

Prerequisites:

- ① Boom operating conditions (fully extended boom length), min length is 13.8m and max. length is 73m
- ② The span of outriggers is 8.2m×8.35m
- ③ 360° rotation is applied
- ④ Counterweight is 76.6T

Working range (m)	Main boom										Working range (m)	
	27.1	27.1	31.6	31.6	31.6	31.6	36.0	36.0	36.0	36.0		
3												3
3.5												3.5
4												4
4.5	45.0	44.8										4.5
5	42.2	42.3	100.0	87.8	53.8	35.9						5
6	37.8	38.0	100.0	79.4	48.3	32.3	92.0	72.4	66.4	72.3		6
7	34.1	34.5	95.0	73.4	44.2	29.3	85.0	63.6	60.4	63.4		7
8	31.1	31.4	87.0	67.7	40.8	27.1	78.0	56.4	54.6	56.3		8
9	28.3	28.7	79.3	62.0	37.3	25.2	71.0	51.9	51.1	51.8		9
10	26.1	26.4	73.0	57.5	34.3	23.1	65.0	48.0	47.9	47.4		10
11	24.6	24.9	67.5	52.7	31.5	21.2	62.0	45.3	46.0	44.8		11
12	22.5	22.8	63.0	50.9	30.4	20.1	59.0	43.8	44.5	42.6		12
14	19.8	20.0	55.5	44.5	26.1	17.6	55.0	42.2	43.7	40.4		14
16	17.7	17.9	46.5	39.7	23.4	15.5	47.5	35.1	36.3	33.3		16
18	15.4	15.8	38.8	34.8	20.1	13.3	39.7	31.1	32.8	29.5		18
20	13.6	13.9	32.9	30.2	17.2	11.6	33.8	27.7	29.7	26.3		20
22	13.1	13.3	28.3	27.1	15.3	10.2	29.2	24.2	26.4	23.0		22
24			24.6	23.6	13.9	9.3	25.5	21.4	23.7	20.3		24
26			21.6	20.5	13.5	9.1	22.5	19.1	21.5	18.1		26
28							19.9	17.9	20.5	16.7		28
30							17.8	15.9	19.4	16.0		30
32												32
34												34
36												36
38												38
40												40
42												42
44												44
46												46
48												48
50												50
52												52
54												54
56												56
58												58
60												60
62												62
64												64
66												66
Number of line	5	5	10	9	6	4	9	8	7	8		Number of line
2	0	0	45	90	0	0	45	90	0	45		2
3	0	0	45	45	0	0	45	90	45	90		3
4	0	0	45	45	0	0	45	45	45	90		4
5	0	0	45	0	90	0	45	0	45	0		5
6	90	45	0	0	45	90	45	0	45	0		6
7	45	90	0	0	45	90	0	0	45	0		7

**SAC2200C ALL-TERRAIN CRANE
LOAD CHART**
Prerequisites:

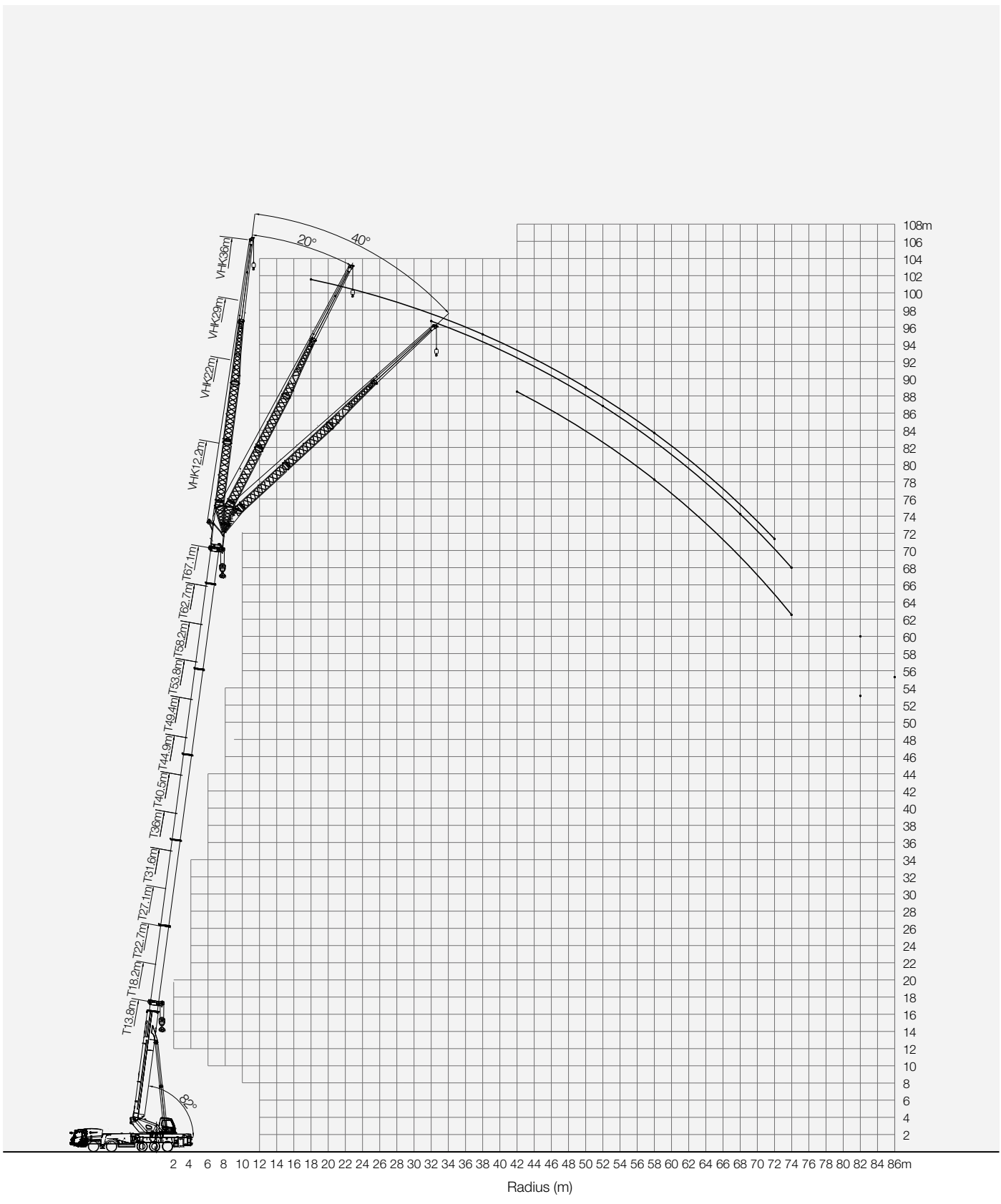
- ① Boom operating conditions (fully extended boom length), min length is 13.8m and max. length is 73m
- ② The span of outriggers is 8.2m×8.35m
- ③ 360° rotation is applied
- ④ Counterweight is 76.6T

Working range (m)	Main boom										Working range (m)	
	40.5	40.5	40.5	40.5	44.9	44.9	44.9	44.9	49.4	49.4		
3												3
3.5												3.5
4												4
4.5												4.5
5												5
6												6
7	68.0	67.2	67.6	35.5								7
8	65.0	62.1	61.5	32.2	54.4	55.0	38.7	35.5				8
9	62.0	58.2	57.7	30.2	51.0	51.5	36.6	33.0	42.0	41.4		9
10	59.0	54.4	54.0	28.7	47.4	47.9	34.0	30.6	40.9	40.7		10
11	56.0	50.8	51.2	26.8	44.5	44.6	31.9	28.3	38.7	38.2		11
12	53.0	47.3	46.9	25.0	41.7	41.8	29.9	26.5	36.2	36.0		12
14	49.0	43.0	43.3	22.3	37.1	37.5	27.1	23.6	32.8	32.3		14
16	45.0	39.2	39.1	20.1	33.1	33.5	24.1	20.9	29.3	28.9		16
18	40.6	35.7	34.3	18.0	30.0	29.7	21.8	18.6	26.5	26.1		18
20	34.7	30.3	29.4	15.6	27.1	25.3	19.3	16.1	24.2	23.9		20
22	30.1	26.4	26.1	13.8	24.6	24.0	18.2	15.2	22.0	21.4		22
24	26.4	22.3	21.3	11.4	22.3	21.4	16.5	13.6	20.2	19.8		24
26	23.3	19.2	18.7	10.0	20.6	19.8	15.6	12.8	18.3	17.9		26
28	20.8	18.2	17.5	9.6	18.9	17.9	14.5	11.6	16.9	16.5		28
30	18.6	16.1	15.4	8.4	17.5	16.5	13.5	10.6	15.6	15.0		30
32	16.7	14.3	13.7	7.6	16.1	14.9	12.5	10.0	14.4	13.8		32
34	15.1	13.7	13.0	7.2	14.6	13.3	11.5	9.0	13.3	12.8		34
36					13.1	11.9	11.0	8.6	12.2	11.7		36
38					11.9	10.6	10.3	7.9	11.5	11.0		38
40									10.6	10.1		40
42									9.7	9.2		42
44												44
46												46
48												48
50												50
52												52
54												54
56												56
58												58
60												60
62												62
64												64
66												66
Number of line	7	7	7	4	6	6	4	4	5	5	Number of line	
2	45	90	90	0	90	90	45	0	90	90	2	
3	45	45	90	0	45	90	45	0	90	90	3	
4	45	45	45	45	45	90	45	90	45	90	4	
5	45	45	45	45	45	45	45	90	45	45	5	
6	45	45	0	90	45	0	45	90	45	45	6	
7	45	0	0	90	45	0	90	45	45	0	7	

Prerequisites:

- ① Boom operating conditions (fully extended boom length), min length is 13.8m and max. length is 73m
- ② The span of outriggers is 8.2m×8.35m
- ③ 360° rotation is applied
- ④ Counterweight is 76.6T

Working range (m)	Main boom											Working range (m)
	49.4	49.4	53.8	53.8	53.8	58.2	58.2	62.7	62.7	67.1	73.0	
3												3
3.5												3.5
4												4
4.5												4.5
5												5
6												6
7												7
8												8
9	33.2	27.2										9
10	32.6	26.5	35.8	35.1	31.1							10
11	30.6	25.2	33.8	33.1	28.9	29.1	23.8					11
12	28.8	23.4	32.0	30.9	27.3	27.7	22.6	23.0	21.0			12
14	26.0	21.4	28.7	28.1	24.9	25.3	20.7	21.0	19.1	19.5		14
16	23.0	19.1	26.0	25.3	22.6	23.1	19.0	19.5	17.7	18.1	13.5	16
18	20.7	17.3	23.6	23.4	20.8	21.2	17.4	18.5	16.8	17.0	12.5	18
20	19.2	16.1	21.8	21.2	19.0	19.5	16.0	17.0	15.4	15.9	12.0	20
22	17.1	14.4	19.7	19.1	17.3	18.0	14.7	16.0	14.5	14.9	11.0	22
24	16.0	13.6	18.2	18.0	16.2	16.6	13.6	15.0	13.6	14.0	10.5	24
26	14.5	12.3	16.8	16.6	15.0	15.3	12.5	14.0	12.7	13.1	10.0	26
28	13.4	11.4	15.5	15.1	13.6	14.1	11.5	13.1	11.9	12.3	9.5	28
30	12.2	10.5	14.0	13.6	12.5	13.0	10.7	12.1	11.0	11.4	9.0	30
32	11.4	9.7	13.1	12.7	11.5	12.0	9.9	11.3	10.3	10.7	8.5	32
34	10.5	9.1	12.1	11.7	10.7	11.2	9.2	10.5	9.6	10.0	8.0	34
36	9.5	8.4	11.2	10.7	10.0	10.3	8.5	9.8	9.0	9.3	7.5	36
38	8.9	7.9	10.3	10.0	9.1	9.7	8.0	9.2	8.6	8.6	7.0	38
40	8.3	7.3	9.6	9.3	8.5	8.9	7.5	8.6	8.0	8.1	6.5	40
42	7.6	6.9	8.9	8.5	7.9	8.4	7.0	7.9	7.2	7.6	6.0	42
44			8.2	7.9	7.3	7.7	6.5	7.4	6.9	7.1	5.5	44
46			7.7	7.4	6.8	7.2	6.1	6.9	6.4	6.5	5.0	46
48						6.6	5.6	6.3	5.9	6.1	5.0	48
50						6.2	5.3	5.9	5.6	5.7	4.5	50
52						5.8	5.0	5.4	5.1	5.3	4.5	52
54								5.0	4.7	4.9	4.0	54
56								4.6	4.4	4.6	3.5	56
58										4.2	3.5	58
60										3.9	3.0	60
62											3.0	62
64											2.5	64
66											2.5	66
Number of line	4	3	4	4	4	3	3	3	3	3	2	Number of line
2	45	45	90	90	45	90	45	90	45	90	100	2
3	45	45	90	90	90	90	45	90	90	90	100	3
4	90	45	90	90	90	90	90	90	90	90	100	4
5	90	45	45	90	90	90	90	90	90	90	100	5
6	90	90	45	45	90	45	90	90	90	90	100	6
7	0	90	45	0	0	45	90	45	90	90	100	7



Prerequisites:

- ① Jib length: 12.2m
- ② The span of outriggers is 8.2m×8.35m
- ③ 360°rotation is applied
- ④ Counterweight is 76.6T

Boom (m)	49.4			53.8			58.2			62.7			67.1			Boom (m)
Jib elevation (°)	0	20	40	0	20	40	0	20	40	0	20	40	0	20	40	Jib elevation (°)
10	16															10
11	16			14.4												11
12	15.7			14.3			12.9									12
14	15.5	12.3		14.3			12.8			11.2						14
16	15	11.7		14.2	11.9		12.7			10			7.9			16
18	14.1	11	9.2	13.7	11.3		12.5	11		10			7.9			18
20	13.2	10.5	9	13	10.8	9.2	12.4	10.8		10	10		7.9	7.7		20
22	12.4	10.2	8.8	12.3	10.4	9	11.9	10.4	9.1	10	9.9	8.8	7.8	7.6	6.8	22
24	11.6	9.8	8.7	11.6	10.1	8.8	11.3	10.1	8.9	10	9.4	8.5	7.6	7.5	6.6	24
26	10.8	9.5	8.6	11	9.7	8.7	10.7	9.7	8.8	9.4	9	8.1	7.4	7.3	6.5	26
28	10.2	9	8.5	10.4	9.3	8.6	10.3	9.3	8.6	9	8.7	7.9	7.2	7	6.3	28
30	9.6	8.6	8.3	9.8	8.9	8.4	9.7	8.9	8.5	8.6	8.4	7.6	6.9	6.8	6.1	30
32	8.9	8.2	8	9.2	8.5	8.1	9.2	8.5	8.2	8.1	8	7.3	6.8	6.6	5.9	32
34	8.4	7.7	7.7	8.7	8.1	7.9	8.7	8.1	7.8	7.6	7.6	7	6.5	6.3	5.8	34
36	7.9	7.4	7.4	8.2	7.7	7.6	8.4	7.7	7.6	7	7	6.8	6.2	6.1	5.6	36
38	7.4	7	7	7.8	7.3	7.2	7.9	7.4	7.2	6.5	6.5	6.5	5.9	5.9	5.5	38
40	6.9	6.7	6.7	7.4	6.9	6.9	7.5	7	6.9	6	6	6	5.8	5.6	5.3	40
42	6.6	6.3	6.4	6.9	6.6	6.6	7.1	6.8	6.7	5.8	5.8	5.8	5	5.4	5.2	42
44	6.2	6	6.1	6.3	6.3	6.3	6.8	6.6	6.4	5.6	5.6	5.6	4.6	5.2	5	44
46	5.9	5.8	5.9	6	6	5.9	6.5	6.4	6.1	5	5	5	4.4	5	5	46
48	5.5	5.7		5.6	5.6	5.6	6.2	6.2	5.9	4.6	4.6	4.6	4.2	4.2	4.2	48
50	5.2	5.5		5.2	5.2	5.2	5.6	5.9	5.6	4	4	4	3.9	3.9	3.9	50
52	4.9	5.3		4.8	4.8		5.1	5.4	5	3.8	3.8		3.6	3.6	3.6	52
54	4.7	5.7		4.2	4.2		4.7	4.9		3.5	3.5		3.1	3.1	3.1	54
56	4.4			3.8	3.8		4.3	4.5		3.2	3.2		2.9	2.9	2.9	56
58				3.2	3.2		3.9	4.1		2.8	2.8		2.8	2.8	2.8	58
60							3.5	3.7		2.5	2.5		2.5	2.5	2.5	60
62							3.1	3.3		2.2	2.2		2.2	2.2		62
64										1.9	1.9		1.8	1.8		64
66														1		66
Number of line	2			2			2			1			1			Number of line
Hook (kg)	447															Hook (kg)

SAC2200C ALL-TERRAIN CRANE
LOAD CHART
Prerequisites:

- ① Jib length: 22m
- ② The span of outriggers is 8.2m×8.35m
- ③ 360° rotation is applied
- ④ Counterweight is 76.6T

Boom (m)	49.4			53.8			58.2			62.7			67.1			Boom (m)
Jib elevation (°)	0	20	40	0	20	40	0	20	40	0	20	40	0	20	40	Jib elevation (°)
11	7.1															11
12	7.1			6.8			6.4									12
14	7.1			6.8			6.4			5.8						14
16	7			6.7			6.4			5.8			4.7			16
18	6.9			6.7			6.4			5.7			4.7			18
20	6.4	5.5		6.6			6.3	5.5		5.7			4.7			20
22	6.3	5.3		6.5	5.4		6.2	5.4		5.7			4.7			22
24	6.1	5.2		6.4	5.3		6.1	5.3		5.6	5		4.7			24
26	6	5.1	4.3	6.2	5.2		6	5.2		5.6	5		4.6	4.4		26
28	5.9	5	4.3	5.8	5.1	4.2	5.8	5.1	4.1	5.5	4.9		4.6	4.4		28
30	5.7	4.9	4.2	5.6	5	4.1	5.7	5	4.1	5.4	4.8	4.1	4.5	4.3		30
32	5.6	4.8	4.2	5.5	4.9	4.1	5.6	4.9	4.1	5.3	4.8	4.1	4.5	4.2	3.9	32
34	5.4	4.8	4.2	5.3	4.8	4.1	5.5	4.8	4.1	5.2	4.7	4.1	4.4	4.1	3.9	34
36	5.2	4.7	4.1	5.2	4.7	4.1	5.3	4.8	4.1	5.1	4.6	4	4.3	4.1	3.9	36
38	5.1	4.7	4.1	5	4.7	4.1	5.2	4.7	4.1	5	4.6	4	4.2	4	3.8	38
40	5	4.6	4.1	5	4.6	4.1	5	4.7	4.1	4.9	4.5	4	4.1	3.9	3.7	40
42	4.9	4.5	4.1	4.9	4.6	4.1	5	4.6	4	4.8	4.4	4	4.1	3.8	3.6	42
44	4.8	4.4	4.1	4.8	4.5	4.1	4.9	4.5	4	4.7	4.4	4	4	3.7	3.6	44
46	4.6	4.3	4.1	4.6	4.5	4.1	4.7	4.4	4	4.6	4.3	4	3.9	3.6	3.5	46
48	4.5	4.3	4.1	4.5	4.4	4.1	4.6	4.4	4	4.4	4.2	4	3.8	3.5	3.4	48
50	4.3	4.2	4.1	4.4	4.3	4.1	4.5	4.4	4	4.3	4.1	3.9	3.5	3.4	3.4	50
52	4.4	4.1	4.1	4.6	4.2	4.1	4.4	4.3	4	4	4	3.9	3.3	3.3	3.3	52
54	4.2	4.1	4.1	4.4	4.1	4.1	4.3	4.2	4	3.6	3.6	3.6	3.2	3.2	3.3	54
56	4	3.9	3.7	4.2	4.1	4.1	3.8	3.8	3.8	3.3	3.3	3.3	2.8	2.8	2.8	56
58	3.8	3.8		4.1	4	4	3.6	3.6	3.6	3	3	3	2.5	2.5	2.5	58
60	3.6			3.9	4	3.8	3.5	3.5	3.5	2.7	2.7	2.7	2.2	2.2	2.2	60
62	3.4			3.7	3.8		3	3	3	2.5	2.5	2.5	2	2	2	62
64				3			2.6	2.6		2.3	2.3	2.3	1.8	1.8	1.8	64
66							2.2			2	2	2	1.6	1.6	1.6	66
68							2			1.7	1.7		1.2	1.2	1.2	68
70										1.4	1.4		1	1	1	70
72										1			1.8	1.8		72
74													0.8			74
76																76
Number of line	1			1			1			1			1			Number of line
Hook (kg)	447															Hook (kg)

Prerequisites:

- ① Jib length: 29m
- ② The span of outriggers is 8.2m×8.35m
- ③ 360° rotation is applied
- ④ Counterweight is 76.6T

Boom (m)	49.4			53.8			58.2			62.7			67.1			Boom (m)
Jib elevation (°)	0	20	40	0	20	40	0	20	40	0	20	40	0	20	40	Jib elevation (°)
11																11
12	5.2															12
14	5.2			4.9			4.7									14
16	5.2			4.9			4.7			4.2			3.3			16
18	5.2			4.9			4.7			4.2			3.3			18
20	5.1			4.9			4.7			4.2			3.3			20
22	4.8			4.8			4.6			4.2			3.3			22
24	4.8	3.9		4.8			4.6			4.2			3.3			24
26	4.8	3.8		4.6	3.6		4.5	3.6		4.1			3.3			26
28	4.6	3.7		4.5	3.5		4.3	3.5		4	3.3		3.3			28
30	4.5	3.6	1.5	4.4	3.4	1.5	4.2	3.4	1.5	4	3.2		3.3	2.9		30
32	4.3	3.4	1.5	4.2	3.4	1.5	4.1	3.3	1.5	3.9	3.1	1.4	3.3	2.9	1.5	32
34	4.2	3.3	1.5	4.1	3.3	1.5	4	3.2	1.5	3.8	3.1	1.4	3.2	2.9	1.5	34
36	4	3.2	1.4	4	3.2	1.4	3.9	3.1	1.4	3.7	3	1.4	3.2	2.8	1.4	36
38	3.9	3.1	1.4	3.9	3.1	1.4	3.8	3.1	1.4	3.6	3	1.4	3.2	2.8	1.4	38
40	3.7	3	1.4	3.7	3	1.4	3.7	3	1.4	3.5	2.9	1.4	3.1	2.7	1.4	40
42	3.6	2.9	1.4	3.6	2.9	1.4	3.6	2.9	1.4	3.4	2.9	1.4	3	2.7	1.4	42
44	3.5	2.9	1.4	3.5	2.9	1.4	3.5	2.9	1.4	3.3	2.9	1.4	2.9	2.6	1.4	44
46	3.3	2.9	1.4	3.4	2.9	1.4	3.3	2.9	1.4	3.2	2.8	1.4	2.8	2.5	1.4	46
48	3.2	2.8	1.4	3.3	2.8	1.4	3.2	2.8	1.4	3.1	2.7	1.4	2.7	2.5	1.4	48
50	3.1	2.7	1.4	3.2	2.8	1.4	3.1	2.7	1.4	3.1	2.7	1.4	2.6	2.4	1.4	50
52	2.9	2.7	1.4	3.1	2.7	1.4	3.1	2.7	1.4	3	2.6	1.4	2.6	2.3	1.4	52
54	2.8	2.6	1.4	3	2.6	1.4	3	2.6	1.4	2.9	2.6	1.4	2.5	2.3	1.4	54
56	2.8	2.6	1.4	2.9	2.6	1.4	2.9	2.6	1.4	2.9	2.5	1.4	2.4	2.3	1.4	56
58	2.7	2.5	1.4	2.9	2.6	1.4	2.9	2.5	1.4	2.8	2.5	1.4	2.3	2.2	1.3	58
60	2.6	2.5	1.4	2.8	2.5	1.4	2.8	2.5	1.4	2.6	2.5	1.4	2.3	2.2	1.3	60
62	2.5	2.5		2.7	2.4	1.4	2.6	2.5	1.4	2.2	2.2	1.4	2.1	2.1	1.3	62
64	2.4	2.4		2.7	2.4	1.4	2.5	2.4	1.4	2	2	1.4	1.8	1.8	1.3	64
66	2.4	2.4		2.6	2.4		2.4	2.4	1.4	1.7	1.7	1.4	1.4	1.4	1.3	66
68	2.3	2.4		2.5	2.4		2	2	1.4	1.5	1.5	1.4	1.2	1.2	1.2	68
70				2.4	2.4		1.8	1.8		1.4	1.4	1.4	1	1	1	70
72				2.4			1.4	1.4		1.2	1.2	1.2	0.8	1	1	72
74							1.2	1.2		1	1			0.8		74
76							1			0.8	1					76
78																78
80																80
82																82
Number of line	1			1			1			1			1			Number of line
Hook (kg)	447															Hook (kg)

**SAC2200C ALL-TERRAIN CRANE
LOAD CHART**
Prerequisites:

- ① Jib length: 36m
- ② The span of outriggers is 8.2m×8.35m
- ③ 360° rotation is applied
- ④ Counterweight is 76.6T

Boom (m)	49.4			53.8			58.2			62.7			67.1			Boom (m)
Jib elevation (°)	0	20	40	0	20	40	0	20	40	0	20	40	0	20	40	Jib elevation (°)
14	3.7			3.5												14
16	3.7			3.5			3.2									16
18	3.7			3.5			3.2			2.9			2.2			18
20	3.7			3.5			3.2			2.9			2.2			20
22	3.6			3.4			3.2			2.9			2.2			22
24	3.5			3.3			3.2			2.9			2.2			24
26	3.3			3.2			3.1			2.9			2.2			26
28	3.2	2.4		3.1			3			2.8			2.2			28
30	3.1	2.3		3	2.3		2.9			2.8			2.2			30
32	3	2.2		2.9	2.2		2.9	2.2		2.7	2.1		2.2	1.7		32
34	2.9	2.1		2.9	2.1		2.8	2.1		2.6	2		2.2	1.7		34
36	2.8	2.1		2.8	2.1		2.7	2		2.5	1.9		2.2	1.7		36
38	2.7	2	1.5	2.7	2		2.6	2		2.5	1.9		2.1	1.7		38
40	2.6	2	1.5	2.6	2	1.4	2.5	1.9	1.4	2.4	1.9	1.4	2.1	1.7		40
42	2.5	1.9	1.5	2.5	1.9	1.4	2.4	1.9	1.4	2.3	1.8	1.4	2	1.7	1.4	42
44	2.4	1.9	1.5	2.4	1.9	1.4	2.4	1.8	1.4	2.2	1.8	1.4	2	1.6	1.4	44
46	2.3	1.8	1.4	2.3	1.8	1.4	2.3	1.8	1.4	2.2	1.7	1.4	1.9	1.6	1.4	46
48	2.2	1.7	1.4	2.2	1.8	1.4	2.2	1.7	1.4	2.1	1.7	1.4	1.9	1.6	1.4	48
50	2.1	1.7	1.4	2.1	1.7	1.4	2.1	1.7	1.4	2	1.7	1.4	1.8	1.5	1.4	50
52	2	1.7	1.4	2	1.7	1.4	2	1.6	1.4	2	1.6	1.4	1.8	1.5	1.4	52
54	1.9	1.6	1.4	2	1.6	1.4	2	1.6	1.4	1.9	1.6	1.4	1.7	1.5	1.4	54
56	1.8	1.6	1.4	1.9	1.6	1.4	1.9	1.6	1.4	1.8	1.5	1.4	1.7	1.4	1.3	56
58	1.7	1.5	1.4	1.8	1.5	1.4	1.8	1.5	1.4	1.8	1.5	1.4	1.6	1.4	1.3	58
60	1.6	1.5	1.4	1.8	1.5	1.4	1.8	1.5	1.4	1.7	1.5	1.4	1.6	1.4	1.3	60
62	1.6	1.5	1.4	1.7	1.5	1.4	1.7	1.5	1.4	1.7	1.5	1.4	1.5	1.4	1.3	62
64	1.5	1.4	1.4	1.7	1.5	1.4	1.7	1.5	1.4	1.7	1.4	1.4	1.5	1.4	1.3	64
66	1.4	1.4	1.4	1.6	1.4	1.4	1	1.4	1.4	1.6	1.4	1.4	1.4	1.4	1.3	66
68	1.4	1.4	1.4	1.5	1.4	1.4	1.6	1.4	1.4	1.6	1.4	1.3	1.2	1.2	1.2	68
70	1.4	1.4	1.4	1.5	1.4	1.4	1.6	1.4	1.4	1.5	1.4	1.3	1	1.2	1.2	70
72	1.4	1.4		1.4	1.4	1.4	1.5	1.3	1.4	1.5	1.4	1.3	0.8	1	1	72
74	1.4	1.4		1.4	1.4	1.4	1.5	1.3	1.4	1	1	1		0.8	0.8	74
76				1.4	1.4		1.4	1.3	1.3							76
78				1.4	1.4		1.4	1.3								78
80							1	1								80
82																82
84																84
86																86
Number of line	1			1			1			1			1			Number of line
Hook (kg)	447															Hook (kg)

■ TRUCK CRANE



STC200
Maximum Load Capacity: 20t
Telescopic Boom: 4 Sections, 10.6-33m



STC250
Maximum Load Capacity: 25t
Telescopic Boom: 4 Sections, 10.65-33.5m



STC250H
Maximum Load Capacity: 25t
Telescopic Boom: 5 Sections, 10.5-39.5m



STC300S
Maximum Load Capacity: 30t
Telescopic Boom: 5 Sections, 10.6-40.5m



STC300TH
Maximum Load Capacity: 30t
Telescopic Boom: 4 Sections, 10.6-33.5m



STC300H
Maximum Load Capacity: 30t
Telescopic Boom: 5 Sections, 10.5-39.5m



STC500
Maximum Load Capacity: 50t
Telescopic Boom: 5 Sections, 11.5-43m



STC550
Maximum Load Capacity: 55t
Telescopic Boom: 5 Sections, 11.5-43m



STC600S
Maximum Load Capacity: 60t
Telescopic Boom: 5 Sections, 11.3-43.5m



STC750
Maximum Load Capacity: 75t
Telescopic Boom: 5 Sections, 11.8-45m



STC800S
Maximum Load Capacity: 80t
Telescopic Boom: 5 Sections, 12.2-47m



STC1000
Maximum Load Capacity: 100t
Telescopic Boom: 5 Sections, 13.5-52m



STC1000C
Maximum Load Capacity: 100t
Telescopic Boom: 6 Sections, 13.25-60m



STC1000S
Maximum Load Capacity: 100t
Telescopic Boom: 5 Sections, 12.25-56m



STC1200S
Maximum Load Capacity: 120t
Telescopic Boom: 7 Sections, 12.6-63.5m



STC1300C
Maximum Load Capacity: 130t
Telescopic Boom: 6 Sections, 13.3-60m



STC1600
Maximum Load Capacity: 160t
Telescopic Boom: 6 Sections, 13.4-67m



STC2200
Maximum Load Capacity: 220t
Telescopic Boom: 6 Sections, 14.25-69m

■ ALL TERRAIN CRANE



SAC1800
Maximum Load Capacity: 180t
Telescopic Boom: 6 Sections, 15.5-62m



SAC2200
Maximum Load Capacity: 220t
Telescopic Boom: 6 Sections, 13.5-69m



SAC2600
Maximum Load Capacity: 260t
Telescopic Boom: 6 Sections, 15.6-73m



SAC3000
Maximum Load Capacity: 300t
Telescopic Boom: 7 Sections, 15.4-83m



SAC3500
Maximum Load Capacity: 350t
Telescopic Boom: 6 Sections, 15.2-70m



SAC6000
Maximum Load Capacity: 600t
Telescopic Boom: 7 Sections, 17.1-90m

■ ROUGH-TERRAIN CRANE



SRC250
Maximum Load Capacity: 25t
Telescopic Boom: 4 Sections, 9.9-31.5m



SRC350
Maximum Load Capacity: 35t
Telescopic Boom: 4 Sections, 10-31.5m



SRC550
Maximum Load Capacity: 55t
Telescopic Boom: 4 Sections, 11.25-34.5m



SRC660H
Maximum Load Capacity: 66t
Telescopic Boom: 5 Sections, 11.5-43m



SRC750
Maximum Load Capacity: 75t
Telescopic Boom: 5 Sections, 11.8-45m



SRC1200
Maximum Load Capacity: 120t
Telescopic Boom: 5 Sections, 13-49m



Quality Changes the World

SANY AUTOMOBILE HOISTING MACHINERY

Address: SANY Industrial Park, Jinzhou Development Zone,
Changsha, Hunan, China.
For more information, please Contact Our Exclusive Agent in UAE :

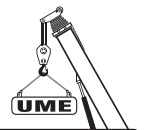
For our consistent improvement in technology, specifications may change without notice.
The machines illustrated may show optional equipment which can be supplied at additional cost.
Version: 2015.08

www.sanyglobal.com



www.united-ume.ae

Exclusive Agent in UAE :



UNITED Mechanical Equipment Trad. Est.

UNITED
MECHANICAL EQUIPMENT

Tel. : +971 2 551 6661

Fax : +971 2 551 6777

Mob. : +971 50 668 8285

P.O. Box : 36639

Abu Dhabi - Musaffah M -11

E-mail : info@united-ume.ae

Web : www.united-ume.ae

United Arab Emirates